

Standard Filter



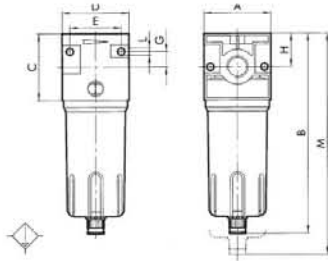
Order Code	Description	€
1221006	20 Micron G1/4	23.86
1321006	20 Micron G3/8	37.80
1421006	20 Micron G1/2	37.80
1521006	20 Micron G3/4	93.55
1621006	20 Micron G1	93.55



Technical Data

Threaded Port
 Max. inlet pressure
 Flow rate at 6 bar ΔP 1 bar (NI/min)
 Fluid
 Max temperature at 10 bar
 Weight
 Wall fixing screws
 Mounting position
 Condensate drain
 Bowl capacity

1/4"	3/8"	1/2"	3/4"	1"
18 bar	18 bar	18 bar	18 bar	18 bar
1720	4100	4100	11000	11000
Compressed Air				
50 °C	50 °C	50 °C	50 °C	50 °C
0.4 kg	0.9 kg	0.9 kg	1.9 kg	1.9 kg
M 4 x 40	M 4 x 55	M 4 x 55	M 6 x 75	M 6 x 75
Vertical				
Manual/Semi-auto (RMSA)				
10 cm ³	45 cm ³	45 cm ³	170 cm ³	170 cm ³



	A	B	C	D	E	G	H	L	M
G 1/4"	42	142	42	42	32	10	21	M4 Hole	185
G 3/8"	60	180	60	60	46	14	30	M4 Hole	230
G 1/2"	60	180	60	60	46	14	30	M4 Hole	230
G 3/4"	80	235	80	80	66	22	40	M6 Hole	325
G 1"	80	235	80	80	66	22	40	M6 Hole	325

Oil Removal Filter



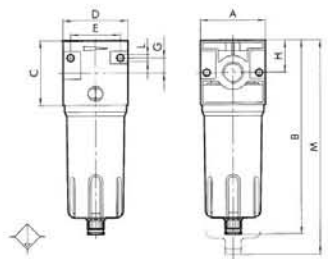
Order Code	Description	€
1422002	G1/2 Ports	94.51



Technical Data

Threaded Port _____ 1/2"
 Degree of filtration _____ 99.97% 0.01µm
 Max. inlet pressure _____ 18 bar
 Flow rate at 6 bar ΔP 1 bar _____ 1600 NI/min
 Recommended flow at 6 bar _____ 230 NI/min
 Fluid _____ Filtered 4µm compressed air
 Max temperature at 10 bar _____ 50 °C
 Weight _____ 0.9 kg
 Wall fixing screws _____ M 4x55
 Mounting position _____ Vertical
 Bowl capacity _____ 45 cm³

Notes: It is advisable to mount a 4µ filter upstream acting as a rough filter.



	A	B	C	D	E	G	H	L	M
G 1/2"	60	180	60	60	46	14	30	M4 hole	230

Standard Pressure Regulator

P11



Order Code	Description	€
1202002	0-8bar G1/4	27.95
1202003	0-12bar G1/4	27.95
1302002	0-8bar G3/8	43.72
1302003	0-12bar G3/8	43.72
1402002	0-8bar G1/2	43.72
1402003	0-12bar G1/2	43.72
1502003	0-12bar G3/4	119.06
1602003	0-12bar G1	119.06

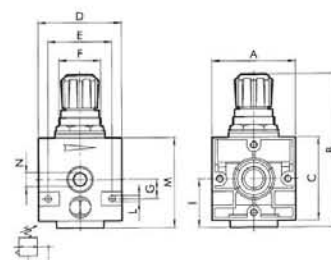


Technical Data

Threaded Port
 Max. inlet pressure
 Flow rate at 6 bar ΔP 1 bar
 Fluid
 Max temperature at 10 bar
 Weight
 Wall fixing screws
 Mounting
 Gauge Port

1/4"	3/8"	1/2"	3/4"	1"
18 bar	18 bar	18 bar	18 bar	18 bar
650 NI/min	2500 NI/min	2500 NI/min	4500 NI/min	4500 NI/min
Filtered, lubricated or unlubricated compressed air. Lubrication, if used, must be continuous				
50 °C	50 °C	50 °C	50 °C	50 °C
0.3 kg	0.8 kg	0.8 kg	2.2 kg	2.2 kg
M 4 x 40	M4 x 55	M4 x 55	M6 x 75	M6 x 75
In any position				
G 1/8"	G 1/8"	G 1/8"	1/4"	1/4"

Notes: The regulator pressure must always be set upwards. For increased sensitivity, use a pressure regulator with a rated pressure as close as possible to the required value. Do not take off air from gauge ports.



	A	B	C	D	E	F	G	H	I	L	M	N
G 1/4"	42	142	42	42	32	30x1.5	10	21	25	M4 Hole	185	1/8
G 3/8"	60	180	60	60	46	38x2	14	30	35	M4 Hole	230	1/8
G 1/2"	60	180	60	60	46	38x2	14	30	35	M4 Hole	230	1/8
G 3/4"	80	235	80	80	66	55x2	22	40	47	M6 Hole	325	1/4
G 1"	80	235	80	80	66	55x2	22	40	47	M6 Hole	325	1/4

Standard Filter Regulator

P11



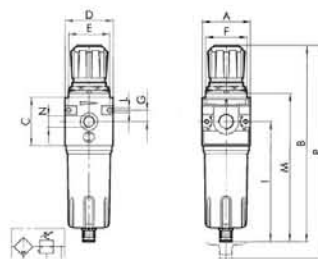
Order Code	Description	€
1225030	20 Micron 0-8bar G1/4	43.04
1225054	20 Micron 0-12bar G1/4	43.04
1325030	20 Micron 0-8bar G3/8	63.67
1325054	20 Micron 0-12bar G3/8	63.67
1425030	20 Micron 0-8bar G1/2	63.67
1425054	20 Micron 0-12bar G1/2	63.67

Technical Data

Threaded Port
 Max. inlet pressure
 Flow rate at 6 bar ΔP 1 bar
 Max temperature at 10 bar
 Weight
 Wall fixing screws
 Mounting position
 Bowl Capacity

1/4	3/8	1/2
18 bar	18 bar	18 bar
700 NI/min	2500 NI/min	2500 NI/min
50 °C	50 °C	50 °C
0.5 kg	1 kg	1 kg
M 4x40	M4x55	M4x55
Vertical		
10 cm ³	45 cm ³	45 cm ³

Notes: The regulator pressure must always be set upwards



	A	B	C	D	E	F	G	I	L	M	N	P
G 1/4"	42	190	42	42	36	30x1.5	10	121	M4 Hole	145	1/8	233
G 3/8"	60	245	60	60	52	30x1.5	14	150	M4 Hole	185	1/8	295
G 1/2"	60	245	60	60	52	30x1.5	14	150	M4 Hole	185	1/8	295

COUPLINGS

HYDRAULICS

PNEUMATICS

BOSCH
REXROTH
PNEUMATICS

AIR
TREATMENT

TUBE
FITTINGS

HOSETAILS &
ADAPTORS

STAINLESS
STEEL

VALVES

TUBING &
HOSECLIPS

HOSE REELS,
PUMPS &
GARAGE
EQUIPMENT

AIR, WATER
& PAINT
GUNS

VACUUM
EQUIPMENT

COMPRESSED
AIR SYSTEMS

MALLEABLE
IRON

TOOLS &
MEASURING

AIR TOOLS
COMPRESSORS

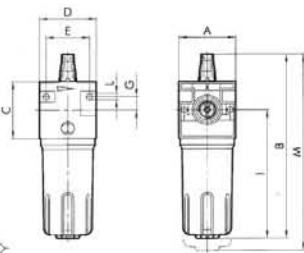
ENGINEERING
MAINTENANCE

PARTS
HANDLING
& STORAGE

ALUMINIUM
PROFILE &
ACCESSORIES

SPILL
CONTROL

Standard Lubricator



Order Code	Description	€
1223001	G1/4	37.73
1323001	G3/8	44.51
1423001	G1/2	44.51
1523001	G3/4	120.27
1623001	G1	120.27

Technical Data

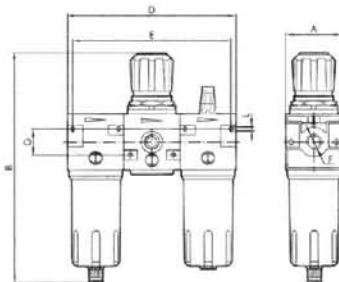
Threaded Port
Type of lubrication
Bowl capacity
Max. inlet pressure
Flow rate at 6 bar \square P 1 bar
Fluid
Max temperature at 10 bar
Weight
Wall fixing screws
Mounting position

1/4"	3/8"	1/2"	3/4"	1"
Mist				
50 cm ³	150 cm ³	150cm ³	380cm ³	380 cm ³
18 bar	18 bar	18 bar	18 bar	18 bar
1100 NI/min	4300 NI/min	4300 NI/min	16000 NI/min	16000 NI/min
Filtered compressed Air				
50°C	50°C	50°C	50°C	50°C
0.4 kg	0.9 kg	0.9 kg	1.8 kg	1.8 kg
M4 x 40	M4 x 55	M4 x 5	M6 x 75	M6 x 75
Vertical				

- Notes:
- Use the screw provided to set the drip rate to drop every 300 - 600 ML.
 - Fit the lubricator as close as possible to the point of use
 - Fill the bowl with oil before pressurising the system
 - Do not use cleaning oil, brake fluid or solvents in general
 - Recommended lubricants:
ISO and UNI FD22 - E.g. Energol HLP 22(BP) - Spinesso 22 (Esso) - Mobil - Tellus Oil 22 (Shell)
 - Automatic filling lubricator and minimum level lubricator

	A	B	C	D	E	G	I	L	M
G 1/4"	42	156	42	42	32	10	121	M4 Hole	176
G 3/8"	60	195	60	60	46	14	136	M4 Hole	220
G 1/2"	80	195	80	80	66	22	182	M4 Hole	290
G 3/4"	80	260	80	80	66	22	182	M6 Hole	290
G 1"	80	260	80	80	66	22	182	M6 Hole	290

Filter + Regulator + Lubricator Set



Order Code	Description	€
1224030	20 Micron 0-8bar G1/4	88.12
1224054	20 Micron 0-12bar G1/4	88.12
1324030	20 Micron 0-8bar G3/8	125.85
1324054	20 Micron 0-12bar G3/8	125.85
1424030	20 Micron 0-8bar G1/2	125.85
1424054	20 Micron 0-12bar G1/2	125.85
1524030	20 Micron 0-12bar G3/4	336.82
1624030	20 Micron 0-12bar G1	336.82

Technical Data

Threaded Port
Max. Inlet Pressure
Flow Rate at 6 bar \square P 1 bar
Fluid
Max. Working Temperature at 10 bar
Weight
Wall fixing screws

1/4"	3/8"	1/2"	3/4"	1"
18 bar	18 bar	18 bar	18 bar	18 bar
400 NI/min	2000 NI/min	2000 NI/min	3600 NI/min	3700 NI/min
Compressed Air				
50 °C	50 °C	50 °C	50 °C	50 °C
1 kg	2.5 kg	2.5 kg	5.8 kg	5.8 kg
M4x40	M4x55	M4x55	M4x75	M4x75

Highly reliable heavy-duty piston-operated FRL unit.

- Stability of the set pressure as the upstream pressure varies.
- Metal bowl with external sight glass.
- Semi-automatic and automatic condensate drain.
- Lubrication proportional to flow rate.
- Micrometric lubrication regulation
- Activation guaranteed with low flow rates.

	A	B	D	E	G	L
G 1/4"	42	190	126	116	20	M4 Hole
G 3/8"	60	245	180	166	28	M4 Hole
G 1/2"	60	245	180	166	28	M4 Hole
G 3/4"	80	332	240	226	44	M6 Hole
G 1"	80	332	240	226	44	M6 Hole

Filter Regulator + Lubricator Sets

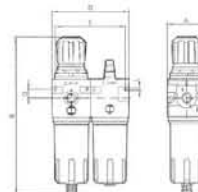
Order Code	Description	€
1226030	20 Micron 0-8bar G1/4	81.90
1226054	20 Micron 0-12bar G1/4	81.90
1326030	20 Micron 0-8bar G3/8	109.76
1326054	20 Micron 0-12bar G3/8	109.76
1426030	20 Micron 0-8bar G1/2	109.76
1426054	20 Micron 0-12bar G1/2	109.76

Technical Data

	G 1/4"	G3/8"	G1/2"
Threaded Port	G 1/4"	G3/8"	G1/2"
Max. Inlet Pressure	18 bar	18 bar	18 bar
Flow Rate at 6 bar ΔP 1 bar	500 NI/min	2200 NI/min	2200 NI/min
Fluid	Compressed Air		
Max. Working Temperature at 10 bar	50 °C	50 °C	50 °C
Weight	0.9 kg	2 kg	2 kg
Wall fixing screws	M4x40	M4x55	M4x55

	A	B	D	E	G	L
G 1/4"	42	190	84	76	10	M4 Hole
G 3/8"	60	245	120	109	14	M4 Hole
G 1/2"	60	245	120	109	14	M6 Hole

P11



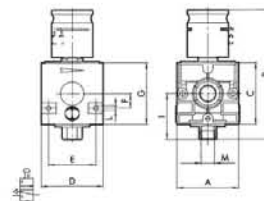
Shut-Off Valve - Lockable

Order Code	M	A	B	C	D	E	F	G	I	L	€
1270001	G1/4	42	105	42	42	32	10	42	32	M4	53.50
1370001	G3/8	60	126	60	60	46	14	60	43	M4	64.08
1470001	G1/2	60	126	60	60	46	14	60	43	M4	64.08

Technical Data

	1/4"	3/8" - 1/2"
Threaded Port	1/4"	3/8" - 1/2"
Max. inlet pressure	18 bar	18 bar
6 bar ΔP 1 bar	1500 NI/min	2900 NI/min
Flow rate on relieving at 6 bar with direct relieving into the atmosphere	1600 NI/min	2900 NI/min
Fluid	56.5 NI/min	103
	Filtered, lubricated or unlubricated compressed air. Lubrication, if used must be continuous	
Max temperature at 10 bar	50 °C	50 °C
Weight	0.35 kg	0.8 kg
Wall fixing screws	M4x40	M4x55
Mounting	In any position	

P11

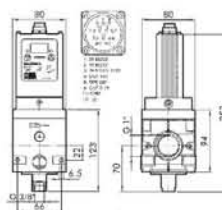


Newtronic Electronic Regulator

Order Code	Description	€
1520001	G3/4 Ports Version A	670.85
1520002	G3/4 Ports Version D	839.13
1620001	G1 Ports Version A	670.85
1620002	G1 Ports Version D	839.13

Technical Data

Setting range	bar	0.3 ÷ 7
Control pressure	bar	1 ÷ 8
Temperature range	°C	-10°C ÷ +50°C
Degree of protection		IP65
Weight	Kg	2.5
Fluid		20 µm filtered air, de-humidified and unlubricated
Supply voltage	V	24VDC
Max. absorbed power	W	2
Control		0 ÷ 5V / 0 ÷ 10V / RS 232
Flow rate at 6.3 bar □ 0.5 bar	NI/min	12000



The Newtronic is an electronically-controlled pressure regulator equipped with an 8-bit microcontroller. The control signal can be analogic, digital via RS232 or digital from the keyboard. It is converted into a proportional pressure signal by means of high-rate solenoid valves. The regulator can be used alone within the indicated flow valves, or in combination with a New deal 1" -3/4" pilot-assisted pressure regulator (power stage).

The advantages are: • Integration with analogic or digital control • Extremely fast response times systems (PC, PLC, etc.) • Low power absorption

Skilltronic comes in two basic versions: - Version A, with analogic control via the mains or RS232 serial line.

- Version D, with control via RS232 serial line or keyboard or mains, with display of the set and regulated pressures.

COUPLINGS

HYDRAULICS

PNEUMATICS

BOSCH
REXROTH
PNEUMATICS

AIR
TREATMENT

TUBE
FITTINGS

HOSETAILS &
ADAPTORS

STAINLESS
STEEL

VALVES

TUBING &
HOSECLIPS

HOSE REELS,
PUMPS &
GARAGE
EQUIPMENT

AIR, WATER
& PAINT
GUNS

VACUUM
EQUIPMENT

COMPRESSED
AIR SYSTEMS

MALLEABLE
IRON

TOOLS &
MEASURING

AIR TOOLS
COMPRESSORS

ENGINEERING
MAINTENANCE

PARTS
HANDLING
& STORAGE

ALUMINIUM
PROFILE &
ACCESSORIES

SPILL
CONTROL