

six-point sockets



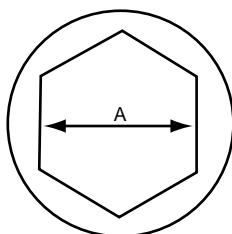
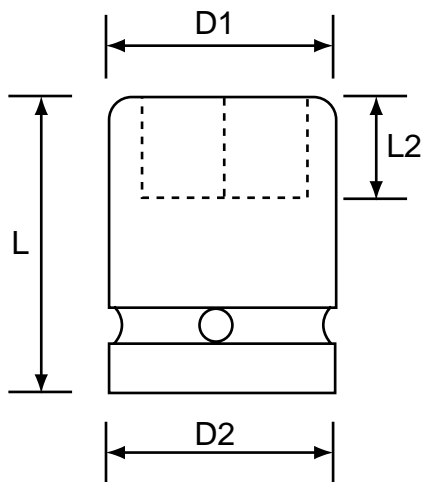
1/4" regular length



mm

Size (A) mm	D2 mm	D1 mm	L2 mm	L mm	£ Price/Piece
4	13	7.6	4	23	3.50
4.5	13	8.2	5	23	3.50
5	13	8.8	5	23	3.50
5.5	13	9.5	5	23	3.50
6	13	10	6	23	3.50
7	13	11.3	6	23	3.50
8	13	12.5	7	23	3.50
9	13	13.8	7	23	3.50
10	13	15	7	23	3.50
11	13	16.3	8	23	3.50
12	13	17	8	23	3.50
13	13	18.8	8	23	3.50
14	13	20	8	23	3.50

2



AF

Size (A) inch	D2 mm	D1 mm	L2 mm	L mm	£ Price/Piece
3/16	13	8.5	5	23	3.50
7/32	13	9.5	5	23	3.50
1/4	13	10.3	6	23	3.50
9/32	13	11.3	6	23	3.50
5/16	13	12.5	7	23	3.50
11/32	13	13.8	7	23	3.50
3/8	13	15	7	23	3.50
7/16	13	16.3	8	23	2.50
1/2	13	18.8	8	23	3.50
9/16	13	20	8	23	3.50

Safety goggles are advised when using impact tools

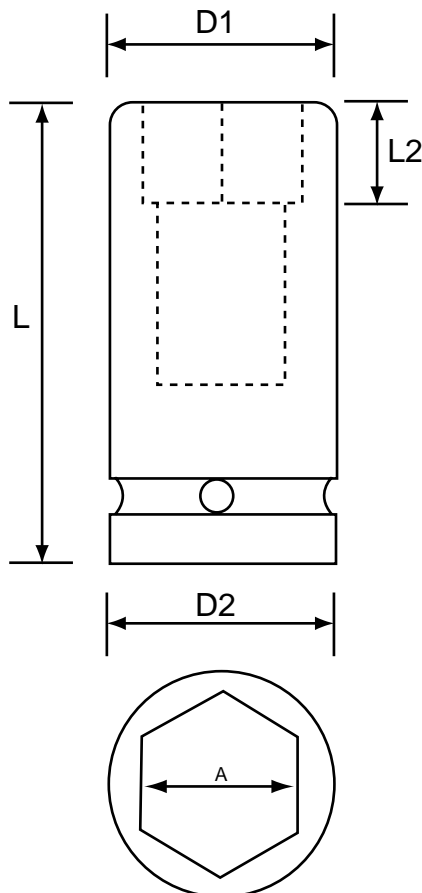
six-point sockets



1/4" deep length



Size (A) mm	D2 mm	D1 mm	L2 mm	L mm	£ Price/Piece
4	13	7.6	4	50	7.00
4.5	13	8.2	6	50	7.00
5	13	8.8	6	50	7.00
5.5	13	9.5	6	50	7.00
6	13	10	7	50	7.00
7	13	11.3	7	50	7.00
8	13	12.5	9	50	7.00
9	13	13.8	9	50	7.00
10	13	15	9	50	7.00
11	13	16.3	9	50	7.00
12	13	17	9	50	7.00
13	13	18.8	9	50	7.00
14	13	20	9	50	7.00



AF

Size (A) inch	D2 mm	D1 mm	L2 mm	L mm	£ Price/Piece
3/16	13	8.5	6	50	7.00
7/32	13	9.5	6	50	7.00
1/4	13	10.3	7	50	7.00
9/32	13	11.3	7	50	7.00
5/16	13	12.5	9	50	7.00
11/32	13	13.8	9	50	7.00
3/8	13	15	9	50	7.00
7/16	13	16.3	9	50	7.00
1/2	13	18.8	9	50	7.00
9/16	13	20	9	50	7.00

six-point sockets



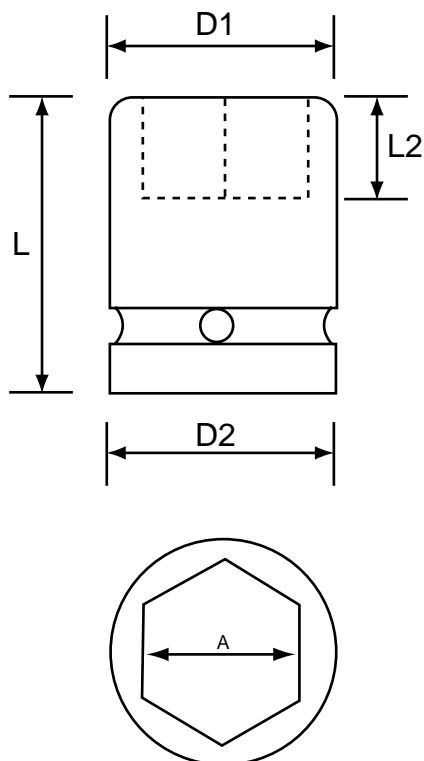
3/8" regular length



mm

Size (A) mm	D2 mm	D1 mm	L2 mm	L mm	£ Price/Piece
6	19	11	4	30	4.00
7	19	12.5	8	30	4.00
8	19	13.8	8	30	4.00
9	19	15	8	30	4.00
10	19	16	8	30	4.00
11	19	17.5	9	30	4.00
12	19	19	9	30	4.00
13	22	20	9	30	4.00
14	22	21	9	30	4.00
15	22	22	11	30	4.00
16	22	24	11	30	4.00
17	22	25	11	30	4.00
18	22	26	11	30	4.00
19	22	27.5	11	30	4.00
20	22	28	12	30	4.00
21	22	30	13	30	4.50
22	23	32	13	30	5.00
24	23	32	15	30	6.00

4



AF

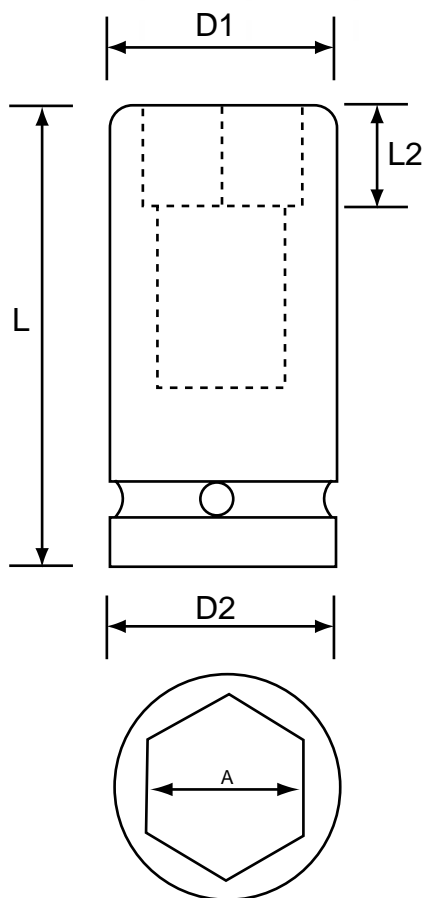
Size (A) inch	D2 mm	D1 mm	L2 mm	L mm	£ Price/Piece
1/4	19	11	4	30	4.00
5/16	19	12.5	8	30	4.00
3/8	19	14.5	8	30	4.00
7/16	19	17	9	30	4.00
1/2	19	19	9	30	4.00
9/16	20	20	9	30	4.00
5/8	24	24	11	30	4.00
11/16	24	24	11	30	4.00
3/4	26	26	11	30	4.00
13/16	28	28	13	30	4.00
7/8	30	30	13	30	5.00
15/16	32	32	13	30	6.00

Safety goggles are advised when using impact tools

six-point sockets



3/8" deep length



mm

Size (A) mm	D2 mm	D1 mm	L2 mm	L mm	£ Price/Piece
7	19	12.5	12	65	8.00
8	19	13.8	12	65	8.00
9	19	15	12	65	8.00
10	19	16	12	65	8.00
11	19	17.5	25	65	8.00
12	19	19	25	65	8.00
13	22	20	25	65	8.00
14	22	21	25	65	8.00
15	22	22	25	65	8.00
16	22	24	25	65	8.00
17	22	25	25	65	8.00
18	22	26	25	65	8.00
19	22	27.5	25	65	8.00
20	22	28	25	65	8.00
21	22	30	25	65	8.00
22	23	32	25	65	9.00
24	23	32	25	65	10.00

AF

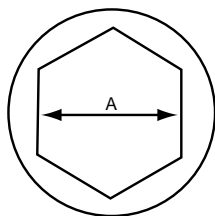
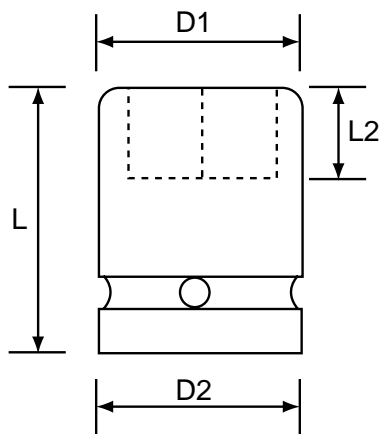
Size (A) inch	D2 mm	D1 mm	L2 mm	L mm	£ Price/Piece
5/16	19	12.5	12	65	8.00
3/8	19	14.5	12	65	8.00
7/16	19	17	25	65	8.00
1/2	19	19	25	65	8.00
9/16	20	20	25	65	8.00
5/8	24	24	25	65	8.00
11/16	24	24	25	65	8.00
3/4	26	26	25	65	8.00
13/16	28	28	25	65	8.00
7/8	30	30	25	65	9.00
15/16	32	32	25	65	10.00

six-point sockets



3/8" regular length

whitworth



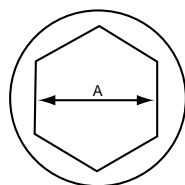
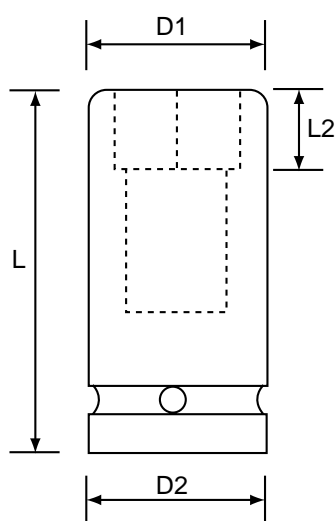
Size (A) whit	D2 mm	D1 mm	L2 mm	L mm	£ Price/Piece
1/8	19	15	8	30	16.00
3/16	19	17	9	30	16.00
1/4	22	21	9	30	16.00
5/16	24	24	11	30	16.00
3/8	22	26	11	30	16.00
7/16	22	30	13	30	20.00
1/2	32	32	13	30	20.00
9/16	35	35	15	40	20.00
5/8	35	42	18	40	22.00
11/16	35	42	18	40	24.00
13/16	30	50	23	40	26.00

6



3/8" deep length

whitworth



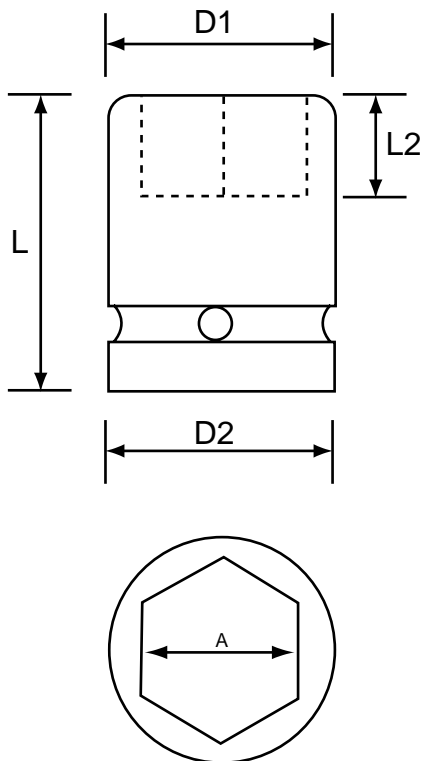
Size (A) whit	D2 mm	D1 mm	L2 mm	L mm	£ Price/Piece
1/8	19	15	12	65	22.00
3/16	19	17	25	65	22.00
1/4	22	21	25	65	22.00
5/16	24	24	25	65	22.00
3/8	22	26	25	65	22.00
7/16	22	30	25	65	22.00
1/2	32	32	25	65	24.00
9/16	38	38	26	65	24.00
5/8	41	41	27	65	26.00
11/16	41	41	27	65	30.00
13/16	45	45	28	56	36.00

Safety goggles are advised when using impact tools

six-point sockets



1/2" regular length



mm

Size (A) mm	D2 mm	D1 mm	L2 mm	L mm	£ Price/Piece
8	25	15	9	38	4.50
9	25	16	12	38	4.50
10	25	17.5	12	38	4.50
11	25	18.7	12	38	4.50
12	25	20	12	38	4.50
13	25	21	12	38	4.50
14	25	22.5	12	38	4.50
15	30	23.7	12	38	4.50
16	30	25	12	38	4.50
17	30	26	13	38	4.50
18	30	27.5	13	38	4.50
19	30	28.7	13	38	4.50
20	30	30	13	38	4.50
21	30	30	13	38	5.00
22	30	32	13	38	5.50
23	30	32	13	38	5.50
24	30	35	20	45	6.50
25	30	36	20	45	6.50
26	30	38	22	50	7.50
27	30	38.7	22	50	8.00
28	30	40	22	50	8.50
29	30	40	22	50	9.00
30	30	42	22	50	10.50
31	30	43	28	50	11.50
32	30	44	28	50	11.50
33	30	45	28	50	12.50
34	30	46	28	50	13.50
35	30	49	28	50	15.50
36	30	49	28	50	15.50
38	38	52.5	26	50	18.75
41	44	58	24	65	50.00

six-point sockets

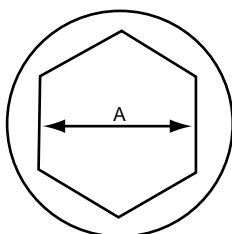
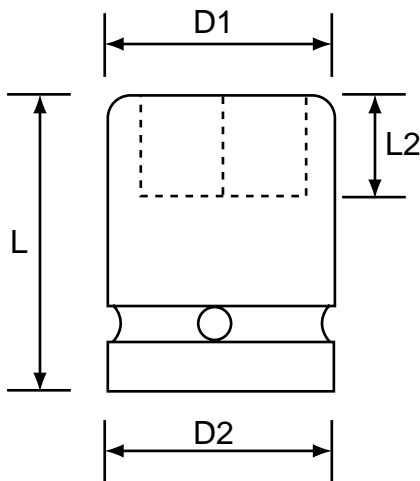


1/2" regular length

AF



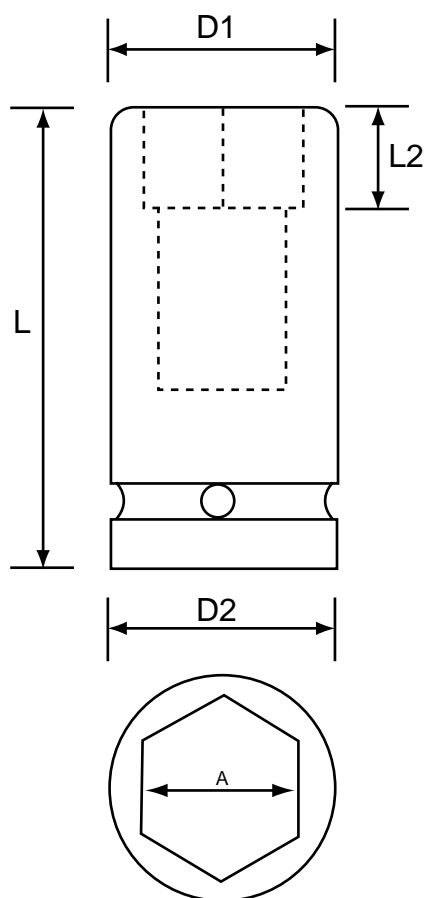
Size (A) inch	D2 mm	D1 mm	L2 mm	L mm	£ Price/Piece
5/16	22	15	9	38	4.50
3/8	22	16	12	38	4.50
7/16	22	18	12	38	4.50
1/2	22	20	12	38	4.50
9/16	24	22	12	38	4.50
5/8	25	25	12	38	4.50
11/16	26	26	13	38	4.50
3/4	28	28	13	38	4.50
13/16	30	30	13	38	4.50
7/8	32	32	13	38	5.50
15/16	34	34	13	38	6.50
1"	36	36	14	38	6.50
1-1/16	38	38	16	40	8.00
1-1/8	38	40	16	40	8.50
1-3/16	38	42	16	40	10.50
1-1/4	38	44	18	40	11.50
1-5/16	38	45	21	43	12.50
1-3/8					
1-7/16	38	50	26	50	16.75
1-1/2	38	52.5	26	50	18.75



six-point sockets



1/2" deep length



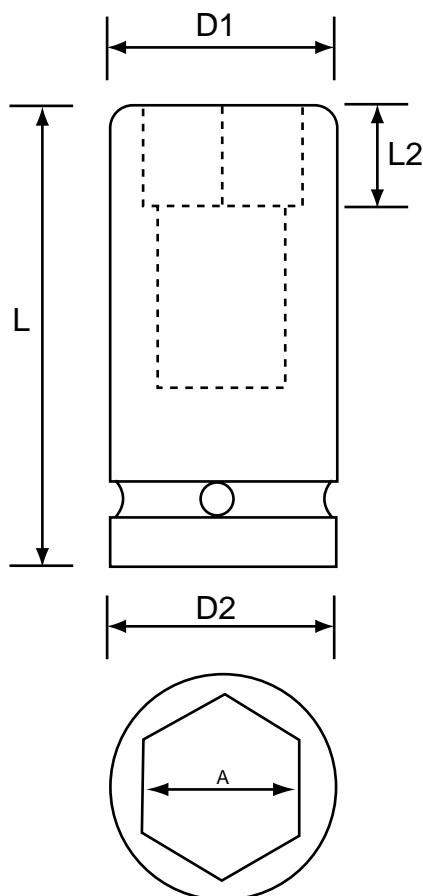
mm

Size (A) mm	D2 mm	D1 mm	L2 mm	L mm	£ Price/Piece
8	25	15	13	78	9.00
9	25	16	14	78	9.00
10	25	17.5	14	78	9.00
11	25	18.7	14	78	9.00
12	25	20	14	78	9.00
13	25	21	14	78	9.00
14	25	22.5	17	78	9.00
15	30	23.7	17	78	9.00
16	30	25	17	78	9.00
17	30	26	17	78	9.00
18	30	27.5	17	78	9.00
19	30	28.7	19	78	9.00
20	30	30	19	78	9.00
21	30	30	24	78	9.00
22	30	32	24	78	10.00
23	30	32	24	78	10.00
24	30	35	24	78	11.00
25	30	36	24	78	11.00
26	30	38	24	78	11.50
27	30	38.7	54	78	12.00
28	30	40	54	78	13.00
29	30	40	54	78	13.00
30	30	42	54	78	14.00
31	30	43	54	78	15.00
32	30	44	54	78	16.00
33	30	45	54	78	17.00
34	30	46	54	78	23.00
35	30	49	54	78	23.00
36	30	49	54	78	24.00
38	38	52.5	54	78	30.75

six-point sockets



1/2" deep length



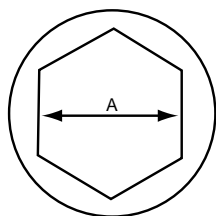
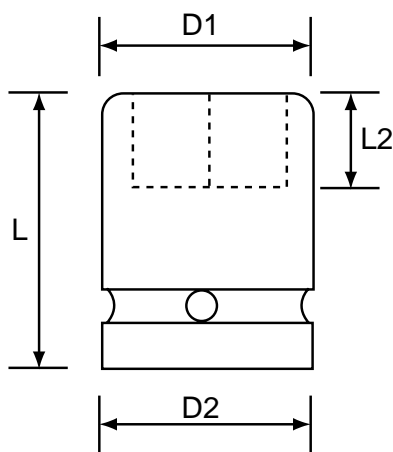
AF

Size (A) inch	D2 mm	D1 mm	L2 mm	L mm	£ Price/Piece
5/16	22	15	13	78	9.00
3/8	22	16	14	78	9.00
7/16	22	18	14	78	9.00
1/2	22	20	14	78	9.00
9/16	24	22	17	78	9.00
5/8	25	25	17	78	9.00
11/16	26	26	17	78	9.00
3/4	28	28	19	78	9.00
13/16	30	30	24	78	9.00
7/8	32	32	24	78	10.00
15/16	34	34	24	78	11.00
1"	36	36	24	78	11.50
1-1/16	38	38	24	78	12.00
1-1/8	38	40	54	78	13.00
1-3/16	38	42	54	78	14.00
1-1/4	38	44	54	78	16.00
1-5/16	38	45	54	78	17.00
1-3/8	38	48.5	54	78	23.00
1-7/16	38	50	54	78	27.00
1-1/2	38	52.5	54	78	30.75

six-point sockets



1/2" regular length

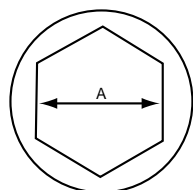
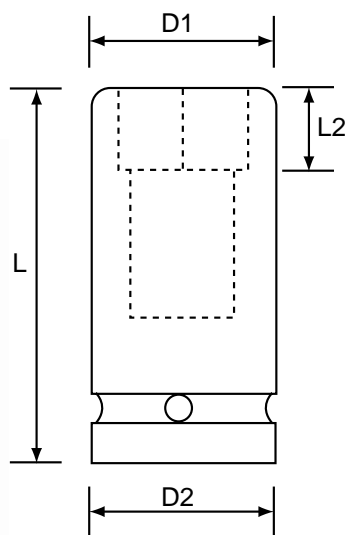


whitworth

Size (A) whit	D2 mm	D1 mm	L2 mm	L mm	£ Price/Piece
1/8	25	16	12	38	18.00
3/16	25	20	12	38	18.00
1/4	25	22.5	12	38	18.00
5/16	25	25	12	38	18.00
3/8	30	27.5	13	38	4.50
7/16	30	30	13	38	12.00
1/2	30	34	13	38	12.00
9/16	30	35	22	50	12.00
5/8	30	40	22	50	8.50
11/16	30	43	28	50	18.00
3/4	30	45	28	50	12.50
7/8	38	52	26	50	20.00



1/2" deep length



whitworth

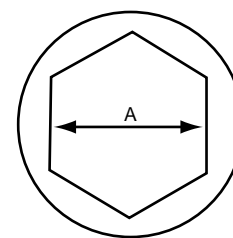
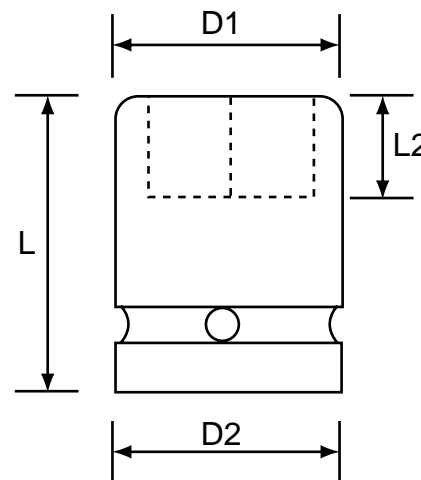
Size (A) whit	D2 mm	D1 mm	L2 mm	L mm	£ Price/Piece
1/8	25	16	14	78	24.00
3/16	25	20	14	78	24.00
1/4	25	22.5	17	78	24.00
5/16	25	25	17	78	24.00
3/8	30	27.5	17	78	9.00
7/16	30	30	24	78	14.00
1/2	30	34	24	78	16.00
9/16	30	35	24	78	16.00
5/8	30	40	54	78	13.00
11/16	30	43	54	78	22.00
3/4	30	45	54	78	17.00
13/16	30	47	57	78	45.00
7/8	38	53	57	78	26.00

six-point sockets



3/4" regular length mm

Size (A) mm	D2 mm	D1 mm	L2 mm	L mm	£ Price/Piece
13	44	25	12	50	11.75
14	44	25	12	50	11.75
15	44	26	12	50	11.75
16	44	27	12	50	11.75
17	44	31	12	50	11.75
18	44	32	12	50	11.75
19	44	33	14	50	11.75
20	44	34	16	50	11.75
21	44	35	16	50	11.75
22	44	37	16	50	11.75
23	44	38	16	50	11.75
24	44	39	16	50	11.75
25	44	40	16	50	11.75
26	44	41	16	50	11.75
27	44	43	16	54	11.75
28	44	44	23	54	11.75
29	44	45	23	54	11.75
30	44	47	23	54	11.75
31	44	48	23	56	12.25
32	44	49	23	56	12.25
33	44	51	23	56	12.75
34	44	52	23	56	15.00
35	44	53	23	56	15.00
36	44	54	23	56	15.00
37	44	56	24	58	18.75
38	44	57	24	58	18.75
39	44	58	24	58	18.75
40	44	58	24	58	18.75
41	44	60	24	58	18.75
42	44	62	24	58	20.75
43	44	63	27	63	21.75
44	44	65	27	63	24.75
45	44	66	27	63	24.75
46	44	67	27	63	24.75
47	44	68	32	68	25.75



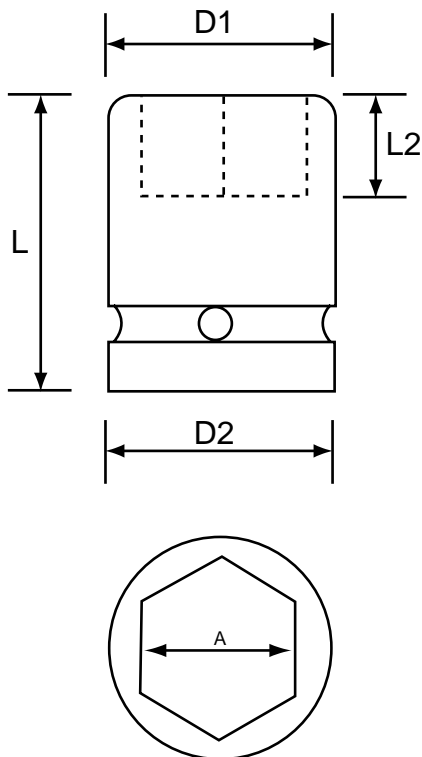
mm

Size (A) mm	D2 mm	D1 mm	L2 mm	L mm	£ Price/Piece
48	44	69	32	68	28.45
49	44	70	34	70	29.75
50	54	71	35	72	29.75
52	54	74	35	72	37.25
54	54	77	35	72	40.75
55	54	77	35	74	40.75
56	54	80	35	74	40.75
60	54	84	35	75	45.75
65	54	88	38	78	55.75
67	54	90	40	80	60.00

six-point sockets



3/4" regular length



AF

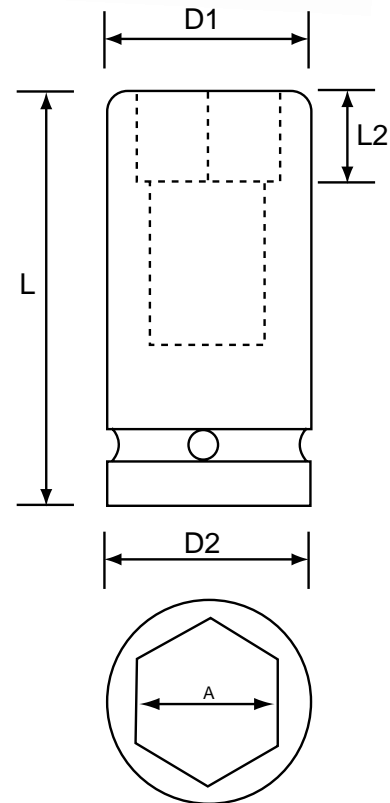
Size (A) inch	D2 mm	D1 mm	L2 mm	L mm	£ Price/Piece
1/2	38	22	12	50	11.75
9/16	38	25.5	12	50	11.75
5/8	38	27.5	12	50	11.75
11/16	38	29	12	50	11.75
3/4	38	30	14	50	11.75
13/16	38	32	16	52	11.75
7/8	38	34	16	52	11.75
15/16	38	36	16	52	11.75
1"	38	40	16	52	11.75
1-1/16	38	40	16	52	11.75
1-1/8	42	42	20	52	11.75
1-3/16	44	44	20	52	11.75
1-1/4	44	44	20	52	12.25
1-5/16	44	47	23	56	12.75
1-3/8	44	50	23	56	15.00
1-7/16	44	51	23	56	18.75
1-1/2	44	53	23	56	18.75
1-9/16	44	56	27	62	18.75
1-5/8	44	58	27	62	18.75
1-11/16	44	63.5	27	62	21.75
1-3/4	44	65	27	62	24.75
1-13/16	44	67	32	68	24.75
1-7/8	44	68	32	68	25.75
1-15/16	44	70	34	70	29.75
2"	54	71	35	72	32.75
2-1/16	54	74	35	72	35.75
2-1/8	54	77	35	72	40.75
2-3/16	54	77	35	74	40.75
2-1/4	54	80	35	74	42.75
2-5/16	54	82	35	75	42.75
2-3/8	54	84	35	75	45.75
2-7/16	54	85	35	75	50.75
2-1/2	54	86	35	75	50.75

six-point sockets



3/4" deep length mm

Size (A) mm	D2 mm	D1 mm	L2 mm	L mm	£ Price/Piece
13	44	25	20	95	16.75
14	44	25	20	95	16.75
15	44	26	20	95	16.75
16	44	27	20	95	16.75
17	44	31	20	95	16.75
18	44	32	20	95	16.75
19	44	33	23	95	16.75
20	44	34	23	95	16.75
21	44	35	23	95	16.75
22	44	37	23	95	16.75
23	44	38	23	95	16.75
24	44	39	51	95	16.75
25	44	40	51	95	16.75
26	44	41	62	95	16.75
27	44	43	62	95	18.75
28	44	44	62	95	18.75
29	44	45	62	95	18.75
30	44	47	62	95	19.75
31	44	48	62	95	19.75
32	44	49	62	95	19.75
33	44	51	62	95	19.75
34	44	52	62	95	22.00
35	44	53	62	95	22.00
36	44	54	62	95	22.00
37	44	56	62	95	27.75
38	44	57	60	95	30.75
39	44	58	60	95	31.75
40	44	58	60	95	31.75
41	44	60	60	95	31.75
42	44	62	60	95	34.75
43	44	63	60	95	34.75
44	44	65	60	95	34.75
45	44	65	68	100	35.75
46	44	67	58	95	35.75
47	44	68	58	95	36.75



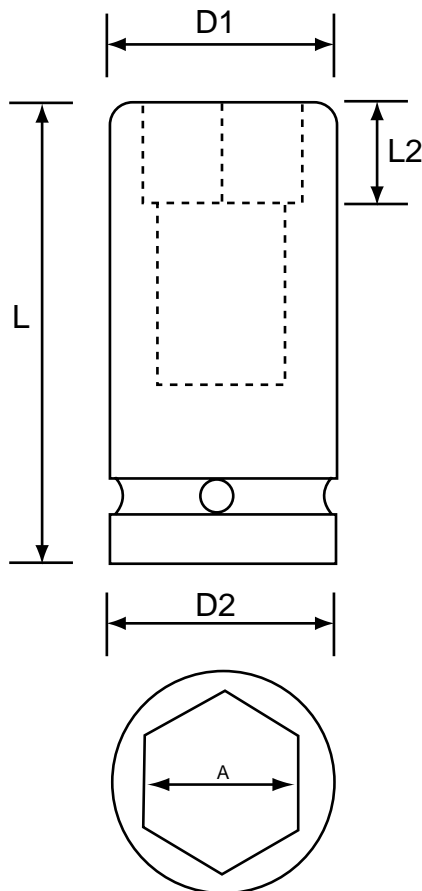
mm

Size (A) mm	D2 mm	D1 mm	L2 mm	L mm	£ Price/Piece
48	44	69	58	95	36.75
49	44	70	58	95	36.75
50	54	71	58	95	36.75
52	54	74	58	95	48.25
54	54	77	64	95	60.75
55	54	77	54	95	60.75
60	54	84	54	95	68.75
65	54	88	54	95	80.75

six-point sockets



3/4" deep length



AF

Size (A) inch	D2 mm	D1 mm	L2 mm	L mm	£ Price/Piece
9/16	38	25.5	20	85	16.75
5/8	38	27.5	20	85	16.75
11/16	38	29	20	85	16.75
3/4	38	30	23	85	16.75
13/16	38	32	23	85	16.75
7/8	38	34	23	85	16.75
15/16	38	36	41	85	16.75
1"	38	40	41	85	16.75
1-1/16	38	40	52	85	18.75
1-1/8	42	42	52	85	18.75
1-3/16	44	44	52	85	19.75
1-1/4	44	49	52	85	19.75
1-5/16	44	50	52	85	22.75
1-3/8	44	50	52	85	22.75
1-7/16	44	51	52	85	26.75
1-1/2	44	56	50	85	30.75
1-9/16	44	56	50	85	31.75
1-5/8	44	58	50	85	31.75
1-11/16	44	63.5	50	85	34.75
1-3/4	44	65	50	85	34.75
1-13/16	44	67	48	85	35.75
1-7/8	44	68	48	85	36.75
1-15/16	44	70	48	85	36.75
2"	54	71	48	95	40.75
2-1/16	54	74	58	95	45.75
2-1/8	54	77	54	95	60.75
2-3/16	54	77	54	95	60.75
2-1/4	54	80	54	95	60.75
2-5/16	54	82	54	95	65.75
2-3/8	54	84	54	95	68.75
2-7/16	54	85	54	95	POA
2-1/2	54	86	54	95	75.75

six-point sockets

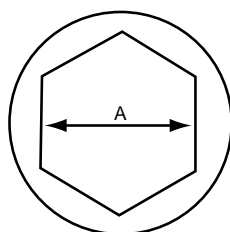
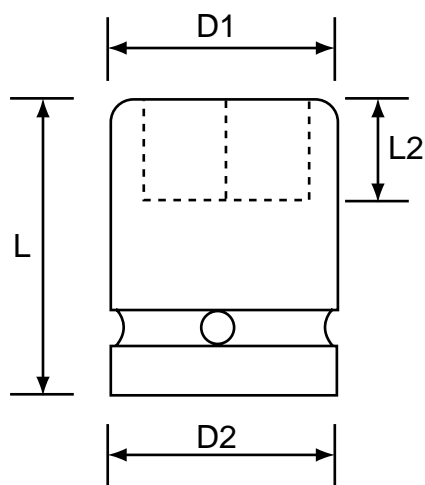


3/4" regular length

whitworth



Size (A) whit	D2 mm	D1 mm	L2 mm	L mm	£ Price/Piece
1/4	44	25	12	50	34.00
5/16	44	25	12	50	34.00
3/8	44	32	12	50	11.75
7/16	44	35	16	50	20.00
1/2	44	38	16	50	20.00
9/16	44	41	16	50	20.00
5/8	44	45	23	54	11.75
11/16	44	48	23	54	20.00
3/4	44	51	23	56	12.75
13/16	44	54	23	56	38.00
7/8	44	58	24	58	26.00
15/16	44	58	24	58	18.75
1"	44	63	27	63	30.00
1-1/16	44	67	27	63	24.75
1-1/8	44	69	32	68	35.00
1-1/4	54	74	35	72	37.25
1-3/8	54	80	35	74	40.75



six-point sockets

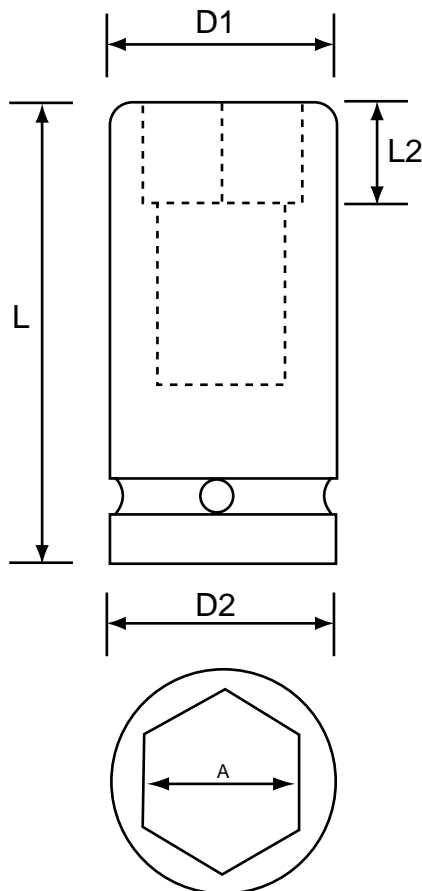


3/4" deep length

whitworth



Size (A) whit	D2 mm	D1 mm	L2 mm	L mm	£ Price/Piece
5/16	44	26	20	100	45.00
3/8	44	32	20	100	16.75
7/16	44	37	23	100	28.00
1/2	44	39	23	100	28.00
9/16	44	40	23	100	28.00
5/8	44	45	23	100	18.75
11/16	44	48	23	100	28.00
3/4	44	51	25	100	19.75
13/16	44	54	25	100	48.00
7/8	44	60	25	100	36.00
15/16	44	60	25	100	31.75
1"	44	60	25	100	40.00
1-1/16	44	67	26	100	35.75
1-1/8	44	69	26	100	45.00
1-1/4	54	74	26	100	48.25
1-3/8	54	77	27	100	POA

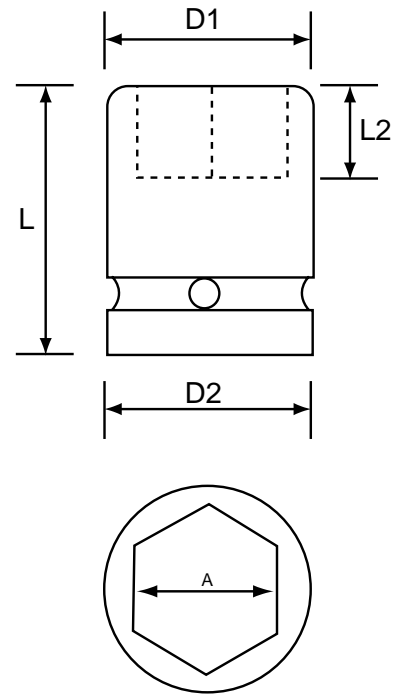


six-point sockets



1" regular length mm

Size (A) mm	D2 mm	D1 mm	L2 mm	L mm	£ Price/Piece
17	54	34	17	58	15.00
18	54	34.5	17	58	15.00
19	54	35.5	17	58	15.00
20	54	36.6	17	58	15.00
21	54	37.5	17	58	15.00
22	54	40	17	58	15.00
23	54	41	17	58	15.00
24	54	42	17	58	15.00
25	54	43	17	58	15.00
26	54	44.5	17	58	15.00
27	54	46	17	58	15.00
28	54	47	17	58	15.00
29	54	48	19	60	15.00
30	54	50	21	60	15.00
31	54	51	21	60	15.00
32	54	52	21	60	15.00
33	54	53	21	60	15.00
34	54	55	21	62	17.50
35	54	55	21	62	17.50
36	54	56	30	65	17.50
37	54	59	30	65	21.00
38	54	59	30	65	21.00
39	54	60	31	67	21.00
40	54	62	31	67	21.00
41	54	63	31	67	21.00
42	54	64	36	74	25.00
43	54	66	36	74	25.00
44	54	67	36	74	26.00
45	54	68	36	74	27.00
46	54	69	36	74	27.00
47	54	72	36	74	28.00
48	54	73	36	74	28.00
50	54	74	42	80	37.00
51	54	76	44	80	37.00
52	54	77	44	84	41.00



mm

Size (A) mm	D2 mm	D1 mm	L2 mm	L mm	£ Price/Piece
53	54	78	44	84	POA
54	54	79	44	84	42.00
55	54	80	44	84	43.00
56	54	81	44	84	44.00
57	54	82	44	84	45.00
58	54	84	44	87	45.00
60	54	86	44	87	47.00
62	54	88	44	87	59.00
63	54	90	44	87	POA
65	54	92	46	90	64.00
67	54	95	48	92	82.00
70	54	99	51	96	95.00
75	86	104	52	98	101.00
80	86	109	52	100	111.00
85	86	115	52	100	130.00
90	86	119	55	105	150.00
95	86	130	55	105	160.00
100	86	132	56	105	170.00
105	95	147	55	105	175.00
110	95	147	55	105	300.00

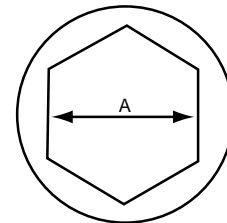
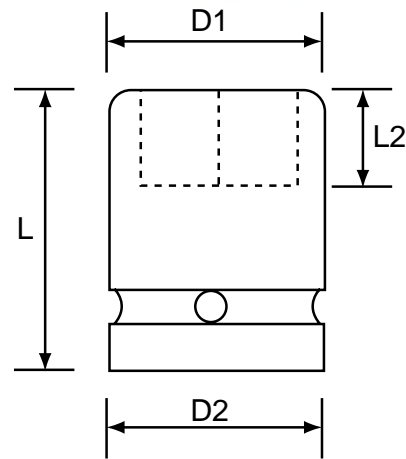
six-point sockets



1" regular length

AF

Size (A) inch	D2 mm	D1 mm	L2 mm	L mm	£ Price/Piece
3/4	51	36	17	58	15.00
13/16	51	38	17	58	15.00
7/8	51	39	17	58	15.00
15/16	51	40	17	58	15.00
1"	51	42	17	58	15.00
1-1/16	51	44	17	58	15.00
1-1/8	51	46	19	58	15.00
1-3/16	51	48	21	60	15.00
1-1/4	51	51	21	60	15.00
1-5/16	52	53	21	62	17.50
1-3/8	52	54	21	62	17.50
1-7/16	52	56	26	62	19.00
1-1/2	52	58	26	62	21.00
1-9/16	52	60	26	62	21.00
1-5/8	52	61.5	26	62	21.00
1-11/16	52	65	27	64	25.00
1-3/4	58	66	27	64	27.00
1-13/16	58	68	27	64	27.00
1-7/8	58	70	28	66	28.00
1-15/16	58	72	28	68	37.00
2"	58	74	31	70	37.00
2-1/16	58	75	31	70	41.00
2-1/8	58	78	31	70	42.00
2-3/16	62	80	32	72	44.00
2-1/4	62	84	34	75	45.00
2-5/16	62	86	34	75	46.00
2-3/8	62	87	35	78	47.00
2-7/16	62	89	35	78	59.00
2-1/2	62	91	36	80	64.00
2-9/16	62	93	36	80	64.00
2-5/8	62	95	38	82	82.00
2-11/16	62	97	38	82	85.00
2-3/4	62	98	40	85	95.00
2-13/16	62	100	40	87	96.00



AF

Size (A) inch	D2 mm	D1 mm	L2 mm	L mm	£ Price/Piece
2-7/8	62	102	41	87	96.00
2-15/16	86	104	48	95	101.00
3"	86	106	52	98	107.00
3-1/8	86	109	52	100	111.00
3-1/4	86	113	52	100	130.00
3-3/8	86	115	52	100	143.00
3-1/2	86	119	55	105	148.00
3-5/8	86	127	55	105	150.00
3-3/4	86	130	55	105	160.00
3-7/8	95	136	52	105	170.00
4"	95	140	52	105	175.00
4-1/8	95	143	52	105	175.00
4-1/4	95	146	52	105	230.00
4-1/2	95	152	52	105	300.00

six-point sockets



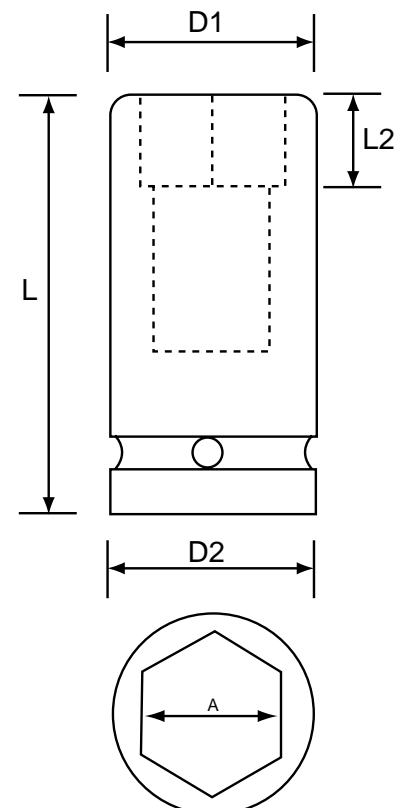
1" deep length

mm

Size (A) mm	D2 mm	D1 mm	L2 mm	L mm	£ Price/Piece
17	54	34	21	100	24.00
18	54	34.5	21	100	24.00
19	54	35.5	21	100	24.00
20	54	36.6	21	100	24.00
21	54	37.5	21	100	24.00
22	54	40	21	100	24.00
23	54	41	21	100	24.00
24	54	42	21	100	24.00
25	54	43	21	100	24.00
26	54	44.5	21	100	24.00
27	54	46	23	100	24.00
28	54	47	23	100	24.00
29	54	48	50	100	24.00
30	54	50	50	100	24.00
31	54	51	50	100	24.00
32	54	52	50	100	24.00
33	54	53	50	100	24.00
34	54	55	50	100	24.00
35	54	55	50	100	32.00
36	54	56	64	100	32.00
37	54	59	64	100	36.00
38	54	59	64	100	38.00
39	54	60	64	100	39.00
40	54	62	64	100	40.00
41	54	63	64	100	40.00
42	54	64	64	100	41.00
43	54	66	64	100	44.00
44	54	67	62	100	46.00
45	54	68	62	100	46.00
46	54	69	62	100	46.00
47	54	72	62	100	46.00
48	54	73	62	100	60.00
50	54	74	62	100	68.00
51	54	76	60	100	68.00

mm

Size (A) mm	D2 mm	D1 mm	L2 mm	L mm	£ Price/Piece
52	54	77	60	100	70.00
53	54	78	60	100	70.00
54	54	79	60	100	75.00
55	54	80	60	100	75.00
56	54	81	65	105	75.00
57	54	82	65	105	79.00
58	54	84	65	105	POA
60	54	86	77	120	92.00
62	54	88	77	120	110.00
63	54	90	77	120	POA
65	54	92	80	125	110.00
67	54	95	80	125	120.00
70	54	99	80	125	130.00
75	86	104	87	135	140.00
80	86	109	87	135	180.00
85	86	115	87	135	280.00
90	86	119	84	135	300.00
95	86	130	84	135	340.00
100	86	132	86	135	POA



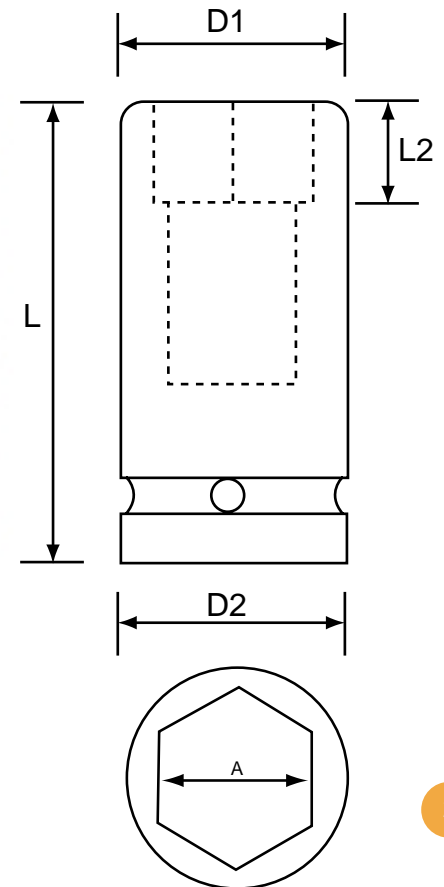
six-point sockets



1" deep length

AF

Size (A) inch	D2 mm	D1 mm	L2 mm	L mm	£ Price/Piece
3/4	51	36	21	90	24.00
13/16	51	38	21	90	24.00
7/8	51	39	21	90	24.00
15/16	51	40	21	90	24.00
1"	51	42	21	90	24.00
1-1/16	51	44	23	90	24.00
1-1/8	51	45	40	90	24.00
1-3/16	51	48	40	90	24.00
1-1/4	51	51	40	90	24.00
1-5/16	52	53	40	90	24.00
1-3/8	52	54	40	90	32.00
1-7/16	52	56	54	90	36.00
1-1/2	52	58	54	92	38.00
1-9/16	52	60	54	92	40.00
1-5/8	52	61.5	54	92	40.00
1-11/16	52	65	54	92	44.00
1-3/4	58	66	54	92	46.00
1-13/16	58	68	54	92	46.00
1-7/8	58	70	54	92	50.00
1-15/16	58	72	54	92	68.00
2"	58	74	54	95	68.00
2-1/16	58	75	54	95	70.00
2-1/8	58	78	54	95	75.00
2-3/16	62	80	60	100	75.00
2-1/4	62	84	60	100	79.00
2-5/16	62	86	62	105	89.00
2-3/8	62	87	62	105	92.00
2-7/16	62	89	67	110	110.00
2-1/2	62	91	67	110	110.00
2-9/16	62	93	75	120	110.00
2-5/8	62	95	75	120	120.00
2-11/16	62	97	78	124	130.00
2-3/4	62	98	78	124	130.00
2-13/16	62	100	80	128	140.00



AF

Size (A) inch	D2 mm	D1 mm	L2 mm	L mm	£ Price/Piece
2-7/8	62	102	80	128	140.00
2-15/16	86	104	85	135	140.00
3"	86	106	85	135	150.00
3-1/8	86	109	85	135	170.00
3-1/4	86	113	85	135	240.00
3-3/8	86	115	85	135	POA
3-1/2	86	119	85	135	POA
3-5/8	86	127	85	135	POA
3-3/4	86	130	85	135	POA
3-7/8	95	136	82	135	POA
4"	95	140	82	135	POA
4-1/8	95	143	82	135	POA
4-1/4	95	146	82	135	POA
4-1/2	95	152	82	135	POA

six-point sockets

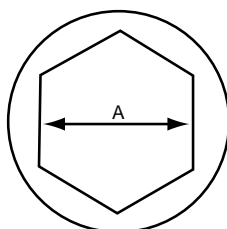
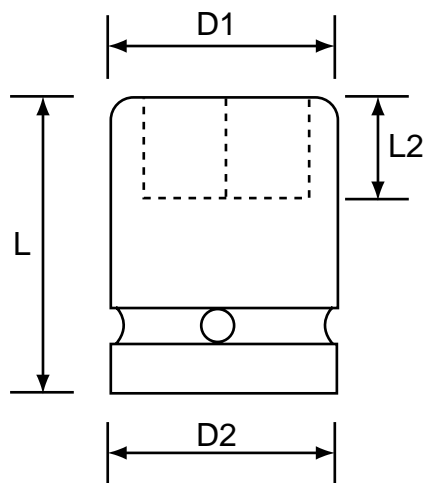
whitworth



1" regular length



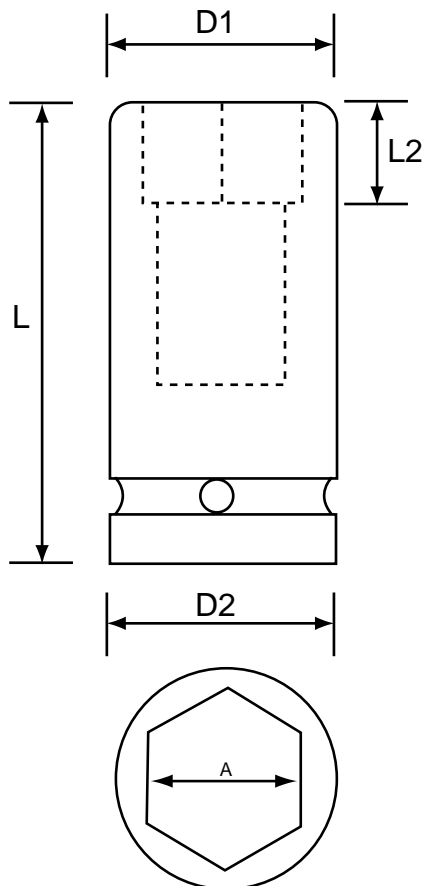
Size (A) Whit	D2 mm	D1 mm	L2 mm	L mm	£ Price/Piece
7/16	51	38	17	58	20.00
1/2	51	40	17	58	20.00
9/16	51	42	17	58	20.00
5/8	51	46	19	58	15.00
11/16	51	46	21	60	20.00
3/4	52	53	21	62	15.00
13/16	52	54	21	62	38.00
7/8	52	58	26	62	26.00
15/16	52	60	26	62	21.00
1"	52	65	27	64	32.00
1-1/16	58	68	27	64	27.00
1-1/8	58	70	28	66	43.00
1-1/4	58	75	31	70	41.00
1-3/8	62	84	34	75	44.00
1-1/2	62	87	35	78	POA
1-5/8	62	93	36	80	POA
1-3/4	62	98	40	85	POA
1-7/8	86	106	52	98	POA
2"	86	113	52	100	POA
2-1/8	86	115	52	100	POA
2-1/4	86	119	55	105	POA
2-3/8	86	130	55	105	POA
2-1/2	96	136	52	105	POA
2-5/8	96	140	52	105	POA
2-3/4	96	146	52	105	POA
2-7/8	96	152	52	106	POA
3"	96	155	52	106	POA



six-point sockets



1" deep length



whitworth

Size (A) Whit	D2 mm	D1 mm	L2 mm	L mm	£ Price/Piece
7/16	54	38	21	100	28.00
1/2	54	41	21	100	28.00
9/16	54	45	21	100	28.00
5/8	54	47	23	100	28.00
11/16	54	51	24	100	24.00
3/4	54	53	24	100	28.00
13/16	54	55	24	100	24.00
7/8	54	59	24	100	48.00
15/16	54	62	24	100	40.00
1"	54	64	25	100	56.00
1-1/16	54	68	25	100	46.00
1-1/8	54	72	25	100	70.00
1-1/4	54	77	25	100	70.00
1-3/8	54	80	26	105	75.00
1-1/2	54	86	26	105	POA
1-5/8	54	92	26	125	POA
1-3/4	86	104	27	135	POA
1-7/8	86	109	28	135	POA
2"	86	109	28	135	POA
2-1/8	86	115	28	135	POA
2-1/4	86	119	28	135	POA
2-3/8	86	130	29	135	POA
2-1/2	86	130	29	135	POA
2-5/8	86	135	30	135	POA
2-3/4	86	138	30	135	POA
2-7/8	86	140	30	135	POA
3"	90	142	30	135	POA

six-point sockets

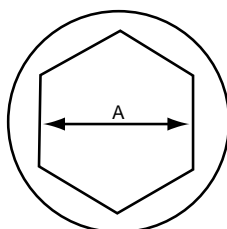
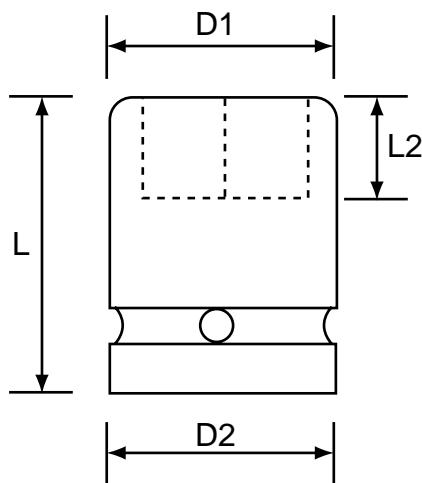


1 1/2" regular length



mm

Size (A) mm	D2 mm	D1 mm	L2 mm	L mm	£ Price/Piece
32	86	58	23	78	75.00
33	86	58	23	78	75.00
34	86	62	23	78	POA
35	86	62	23	78	75.00
36	86	64	23	78	75.00
38	86	66	24	78	75.00
39	86	68	24	78	POA
40	86	68	24	78	75.00
41	86	70	26	80	75.00
42	86	71	26	80	75.00
43	86	74	27	84	POA
44	86	74	27	84	POA
45	86	75	27	84	75.00
46	86	76	27	84	75.00
47	86	77	29	84	75.00
48	86	79	29	84	75.00
50	86	81	29	87	75.00
52	86	83	31	87	75.00
54	86	86	36	90	75.00
55	86	86	36	90	75.00
56	86	86	38	92	75.00
58	86	92	38	92	POA
60	86	93	38	92	95.00
61	86	95	40	95	POA
62	86	96	40	95	111.00
65	86	97	40	95	111.00
70	86	105	43	100	119.00
75	86	110	45	103	148.00
80	86	116	50	110	179.00
85	86	125	55	118	207.00
90	86	130	55	118	230.00
95	95	137	55	118	260.00
100	95	140	58	125	290.00
105	95	150	58	125	300.00
110	95	156	58	125	330.00
115	95	160	65	135	360.00
120	95	168	65	135	400.00
125	95	175	65	135	450.00

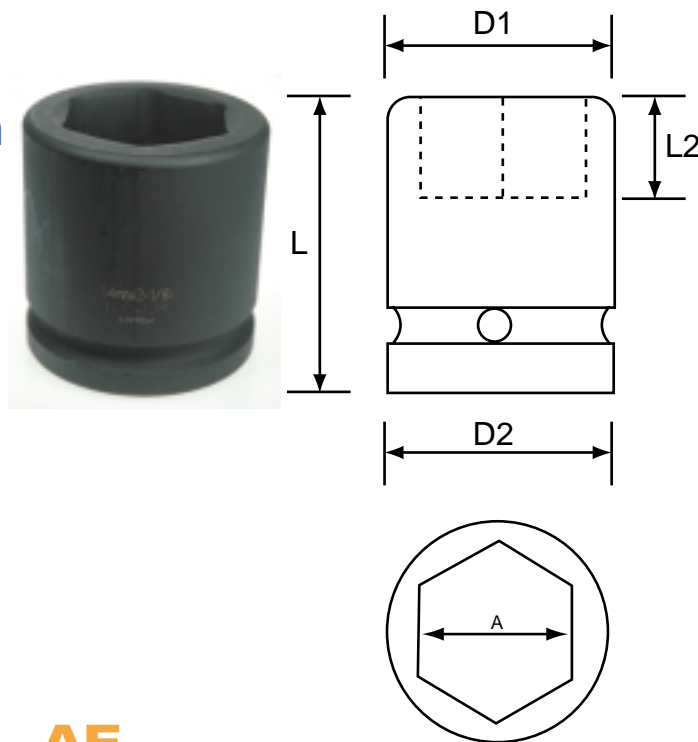


six-point sockets



1 1/2" regular length AF

Size (A) inch	D2 mm	D1 mm	L2 mm	L mm	£ Price/Piece
1-1/4	86	58	23	78	75.00
1-5/16	86	60	23	78	75.00
1-3/8	86	62	23	78	75.00
1-7/16	86	64	23	78	75.00
1-1/2	86	66	24	78	75.00
1-9/16	86	68	24	78	75.00
1-5/8	86	70	26	80	75.00
1-11/16	86	71	26	80	75.00
1-3/4	86	75	27	84	75.00
1-13/16	86	76	27	84	75.00
1-7/8	86	78	29	84	75.00
1-15/16	86	80	29	87	75.00
2"	86	82	29	87	75.00
2-1/16	86	83	30	87	75.00
2-1/8	86	86	36	90	75.00
2-3/16	86	86	36	90	75.00
2-1/4	86	86	38	92	81.00
2-5/16	86	92	38	92	95.00
2-3/8	86	93	38	92	95.00
2-7/16	86	96	40	95	111.00
2-1/2	86	97	40	95	111.00
2-9/16	86	97	40	95	111.00
2-5/8	86	103	43	100	119.00
2-11/16	86	104	43	100	119.00
2-3/4	86	105	43	100	119.00
2-13/16	86	108	45	103	138.00
2 7/8	86	108	45	103	148.00
2-15/16	86	110	45	103	148.00
3"	86	110	45	103	179.00
3-1/16	86	115	50	110	179.00
3-1/8	86	116	50	110	179.00
3-3/16	86	125	50	110	199.00
3-1/4	86	125	50	110	199.00
3-5/16	86	125	55	118	207.00



AF

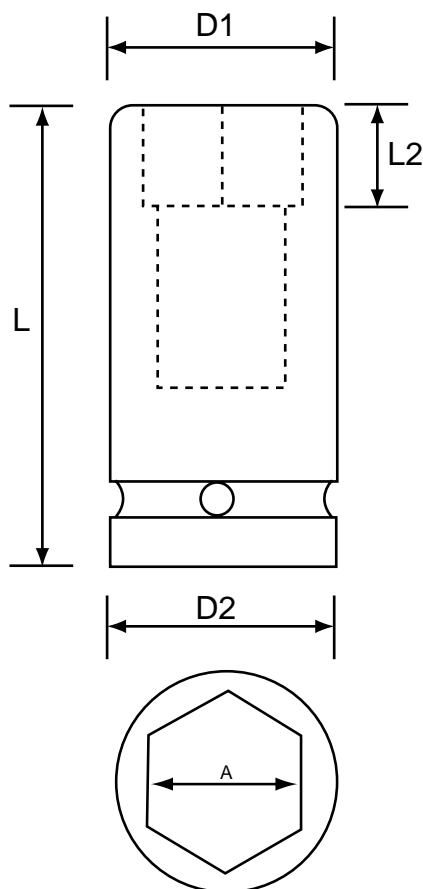
Size (A) inch	D2 mm	D1 mm	L2 mm	L mm	£ Price/Piece
3-3/8	86	125	55	118	220.00
3-7/16	86	128	55	118	220.00
3-1/2	86	130	55	118	220.00
3-9/16	86	130	55	118	230.00
3-5/8	86	130	55	118	230.00
3-11/16	86	130	55	118	250.00
3-3/4	95	137	55	118	260.00
3-13/16	95	140	58	125	260.00
3-7/8	95	140	58	125	260.00
3-15/16	95	140	58	125	290.00
4"	95	140	58	125	300.00
4-1/16	95	140	58	125	300.00
4-1/8	95	150	58	125	300.00
4-3/16	95	150	58	125	320.00
4-1/4	95	150	58	125	320.00
4-5/16	95	156	58	125	330.00
4-3/8	95	160	58	125	340.00
4-7/16	95	160	58	125	340.00
4-1/2	95	160	65	125	340.00
4-5/8	95	168	65	135	360.00
4-3/4	95	168	65	135	400.00

six-point sockets

mm/AF



1 1/2" deep length



Size (A) mm	Size (A) inch	D2 mm	D1 mm	L2 mm	L mm	£ Price/Piece
30	1-3/16	83	56.5	28	120	POA
32	1-1/4	83	59	28	120	POA
33		83	60	28	120	POA
35	1-3/8	83	63	30	120	POA
38	1-1/2	83	66.5	32	120	POA
41	1-5/8	83	70	32	150	POA
	1-3/4	83	75	34	150	POA
46	1-13/16	83	76.5	34	150	POA
50		83	81.5	34	150	POA
51	2	83	82.5	38	150	POA
55		86	88	42	150	POA
60	2-3/8	86	94	42	150	POA
65	2-9/16	86	100	45	150	POA
70	2-3/4	102	106.5	45	170	POA
75	2-15/16	102	113	50	170	POA
	3	102	114	50	170	POA
80	3-1/8	102	119	50	170	POA
85		102	125	50	180	POA
90		102	133	55	180	POA
95	3-3/4	102	140	55	190	POA
100		102	150	65	190	POA
	4	102	150	35	190	POA
105	4-1/8	102	154	65	190	POA
110		102	160	65	200	POA
115		102	165	65	200	POA
120	4-3/4	102	172	65	200	POA

All other sizes available on request

six-point sockets

2 1/2" regular length

mm/AF

Size (A) mm	Size (A) inch	D2 mm	D1 mm	L2 mm	L mm	£ Price/Piece
50		127	82	34	130	POA
51	2	127	86	34	130	POA
55		127	92	36	130	POA
60	2-3/8	127	98	36	130	POA
65	2-9/16	127	104	40	130	POA
70	2-3/4	127	110	40	140	POA
75	2-15/16	127	115	50	140	POA
	3	127	120	50	140	POA
80	3-1/8	127	125	50	140	POA
85		127	131	50	140	POA
	3-1/2	127	135	55	140	POA
90		127	137	55	150	POA
95	3-3/4	127	143	55	150	POA
	3-7/8	127	147	65	150	POA
100		127	150	65	150	POA
	4	153	153	65	150	POA
105	4-1/8	153	156	65	150	POA
	4-1/4	153	159	65	150	POA
110		153	163	65	150	POA
	4-1/2	153	169	65	150	POA
115		153	169	65	150	POA
120	4-3/4	153	180	65	150	POA
	4-7/8	153	182	65	150	POA
125		153	186	65	150	POA
	5	153	190	65	150	POA

All other sizes available on request

