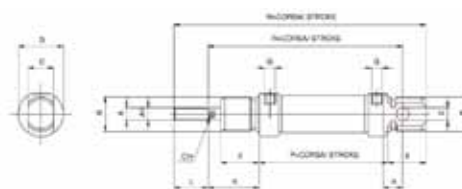




Pneumatic Cylinders ISO 6432



ISO 6432 Double Acting Cylinders

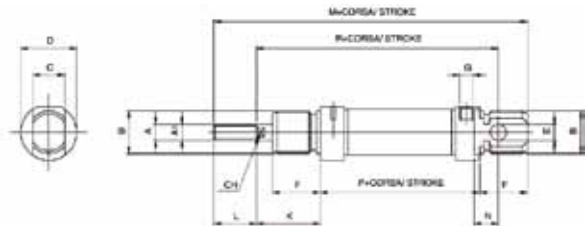


Working Temperature: 0°C (-20°C with Dry Air) - Max +80°C, Working Pressure: 1 - 10bar, Fluid: Filtered Compressed Air, Either Lubricated or Non-Lubricated, Materials: Heads: Anodised Aluminium, Bush: Self Lubricating Sintered Bronze, Piston: Brass, Barrel: AISI304 With Rolled Front And Rear Heads, Piston Rod: Rolled AISI 304, Seals: Special Nitrile Pre-Lubricated For Minimum Friction, Long Life And Non Lube Service, Standard Cushioning Rings On All Sizes. We can supply the full range of Aignep cylinders. Please call for details.

Part No.	Bore Ø (mm)	Stroke (mm)	Port Thread Size	Sensing	Price £
ME0080025	8	25	M5	Non Magnetic	26.40
ME0100025	10	25	M5	Non Magnetic	26.40
ME0100050	10	50	M5	Non Magnetic	27.76
ME0100080	10	80	M5	Non Magnetic	28.20
ME0120010	12	10	M5	Non Magnetic	26.09
ME0120025	12	25	M5	Non Magnetic	27.33
ME0120050	12	50	M5	Non Magnetic	28.97
ME0120080	12	80	M5	Non Magnetic	30.45
ME0120100	12	100	M5	Non Magnetic	31.30
ME0120125	12	125	M5	Non Magnetic	32.46
ME0120160	12	160	M5	Non Magnetic	32.93
MF0160025	16	25	M5	Magnetic	29.23
MF0160050	16	50	M5	Magnetic	30.87
MF0160080	16	80	M5	Magnetic	32.17
MF0160100	16	100	M5	Magnetic	33.86
MF0160125	16	125	M5	Magnetic	33.24
MF0160160	16	160	M5	Magnetic	34.78
MF0160200	16	200	M5	Magnetic	35.34
MF0200010	20	10	G1/8	Magnetic	30.49
MF0200025	20	25	G1/8	Magnetic	31.30
MF0200050	20	50	G1/8	Magnetic	32.60
MF0200080	20	80	G1/8	Magnetic	33.86
MF0200100	20	100	G1/8	Magnetic	35.59
MF0200125	20	125	G1/8	Magnetic	34.78
MF0200160	20	160	G1/8	Magnetic	37.11
MF0200200	20	200	G1/8	Magnetic	39.40
MF0200250	20	250	G1/8	Magnetic	42.47
MF0250010	25	10	G1/8	Magnetic	29.44
MF0250025	25	25	G1/8	Magnetic	30.19
MF0250050	25	50	G1/8	Magnetic	31.94
MF0250080	25	80	G1/8	Magnetic	32.41
MF0250100	25	100	G1/8	Magnetic	33.83
MF0250125	25	125	G1/8	Magnetic	36.10
MF0250160	25	160	G1/8	Magnetic	40.24
MF0250200	25	200	G1/8	Magnetic	42.47
MF0250250	25	250	G1/8	Magnetic	45.59

Dimensions															
Bore Ø mm	A	A'	B	C	D	E	F	G	K	L	M	N	P	R	CH
8	M4	4	M12 X 1.25	8	16	4	12	M5	16	12	86	6	46	64	-
10	M4	4	M12 X 1.25	8	16	4	12	M5	16	12	86	6	46	64	-
12	M6	6	M16 X 1.50	12	19	6	18	M5	22	16	104	9	48	75	5
16	M6	6	M16 X 1.50	12	19	6	18	M5	22	16	109	9	53	82	5
20	M8	8	M22 X 1.50	16	27	8	20	1/8G	24	20	131	12	67	95	7
25	M10 X 1.25	10	M22 X 1.50	16	30	8	22	1/8G	28	22	140	12	68	104	9

ISO 6432 Single Acting Magnetic Sensing & Standard Cushioning Cylinders



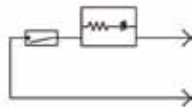
Working Temperature: 0°C (-20°C with Dry Air) - Max +80°C, Working Pressure: 1 - 10bar, Fluid: Filtered Compressed Air, Either Lubricated or Non-Lubricated, Materials: Heads: Anodised Aluminium, Bush: Self Lubricating Sintered Bronze, Piston: Brass, Barrel: AISI304 With Rolled Front And Rear Heads, Piston Rod: Rolled AISI 304, Seals: Special Nitrile Pre-Lubricated For Minimum Friction, Long Life And Non Lube Service, Standard Cushioning Rings On All Sizes.

Part No.	Bore Ø 9mm)	Stroke	Port Thread Size	Price £
MB0200010	20	10	G1/8	29.97
MB0200025	20	25	G1/8	32.00
MB0250025	25	25	G1/8	35.08
MB0250050	25	50	G1/8	35.47

Dimensions															
Bore Ø mm	A	A'	B	C	D	E	F	G	K	L	M	N	P	R	CH
8	M4	4	M12 X 1.25	8	16	4	12	M5	16	12	86	6	46	64	-
10	M4	4	M12 X 1.25	8	16	4	12	M5	16	12	86	6	46	64	-
12	M6	6	M16 X 1.50	12	19	6	18	M5	22	16	104	9	48	75	5
16	M6	6	M16 X 1.50	12	19	6	18	M5	22	16	109	9	53	82	5
20	M8	8	M22 X 1.50	16	27	8	20	1/8G	24	20	131	12	67	95	7
25	M10 X 1.25	10	M22 X 1.50	16	30	8	22	1/8G	28	22	140	12	68	104	9

ISO 6432 Cylinder Accessories

Proximity Sensor



Technical Data: Contact : 3-220 Volt Max. AC/DC Voltage : 3-220 Volt Inductive Load Power : 10 VA Resistive Load Power : 6 Watt Connection Time : 0.5 msec Disconnection Time : 0.1 msec Connection Point : 110 Gauss Disconnection Point : 60 Gauss Electric Life : 10 impulses Contact Resistance : 0.1 ohms Cable Length : 2500 mm Operating Temperature : -20° to + 85°C Safety Device :IP67

Part No.	Description	Price £
DSM2C525	Sensor & Lead	27.83



For Pneumatic Valves see Section 21



Piston Rod Clevis-Yoke



For ISO 6432 Cylinder

Part No.	Bore Ø (mm)	Price £
FC008	08-10	2.68
FC012	12-16	2.24
FC020	20	2.54
FC025	25	3.19

Foot Mounting



For ISO 6432 Cylinder

Part No.	Bore Ø (mm)	Price £
MPD008	08-10	1.32
MPD012	12-16	1.73
MPD020	20-25	2.52

Flange Fastening



For ISO 6432 Cylinder

Part No.	Bore Ø (mm)	Price £
MFL08-10	08-10	1.56
MFL12-16	12-16	1.75
MFL20-25	20-25	2.46

Clevis Foot Mount



For ISO 6432 Cylinder

Part No.	Bore Ø (mm)	Price £
MCC008	08-10	2.88
MCC012	12-16	4.13
MCC020	20-25	4.86

Cylinder & Piston Nuts



For ISO 6431/32 Cylinder, ISO6431 Uses NUT 10, 16 & 20 Only

Part No.	Bore Ø (mm)	Thread Size	Use For	Price £
NUT04	08-10	M4 x 0.7	Piston Rod	0.04
NUT06	12-16	M6 x 1.0	Piston Rod	0.06
NUT08	20	M8 x 1.25	Piston Rod	0.14
NUT10	25-32	M10X1.25	Piston Rod Lock & Piston Mounting Nut	0.29
NUT12	40	M12X1.25	Piston Rod & Cylinder Mounting Nut	0.46
NUT16	50-63	M16X1.50	Piston Rod & Cylinder Mounting Nut	0.54
NUT20	80-100	M20X1.50	Piston Rod Lock Nut	1.15
NUT22	20-25	M22X1.50	Cylinder Mounting Nut	1.15

Mounting Accessories For Switches



For ISO 6432 Cylinder

Part No.	Bore Ø (mm)	Price £
DXF016	16	2.91
DXF020	20	2.91
DXF025	25	2.91

Piston Rod Eye



For ISO 6432 Cylinder

Part No.	Bore Ø (mm)	Price £
TF008	08-10	15.73
TF012	12-16	12.47
TF020	20	14.11
TF025	25-32	14.87

FRL
Section 22



Pneumatic Cylinders ISO 6431

ISO 6431 Double Acting Magnetic Sensing & Adjustable End Position Cushioning Cylinders (VDMA)



Working Temperature: 0°C (-20°C with Dry Air) - Max +80°C, Working Pressure: 1 - 10bar, Fluid: Filtered Compressed air, either lubricated or non-lubricated, Materials: Head, Piston and Barrels: Aluminium Alloy, Piston Rod: Extra thick Chrome Plated Steel, Piston Bearing: Carbon Loaded PTFE with reduced friction factor, Non Standard Strokes Available On Request. We can supply the full range of Aignep cylinders. Please call for details. Note: Also Available; Single Acting, Through Piston Versions and Non Standard Stroke Lengths.

Part No.	Bore Ø (mm)	Stroke	Port Thread Size	Price £
VH0320025	32	25	G1/8	68.62
VH0320050	32	50	G1/8	70.47
VH0320080	32	80	G1/8	72.68
VH0320100	32	100	G1/8	74.56
VH0320125	32	125	G1/8	76.41
VH0320160	32	160	G1/8	79.09
VH0320200	32	200	G1/8	81.88
VH0400025	40	25	G1/4	78.18
VH0400050	40	50	G1/4	80.47
VH0400080	40	80	G1/4	83.21
VH0400100	40	100	G1/4	85.09
VH0400125	40	125	G1/4	87.41
VH0400160	40	160	G1/4	90.56
VH0400200	40	200	G1/4	94.18
VH0500025	50	25	G1/4	93.12
VH0500050	50	50	G1/4	96.15
VH0500080	50	80	G1/4	99.76
VH0500100	50	100	G1/4	102.18
VH0500125	50	125	G1/4	105.21
VH0500160	50	160	G1/4	109.41
VH0500200	50	200	G1/4	113.18
VH0500250	50	250	G1/4	119.06
VH0630050	63	50	G3/8	113.97
VH0630080	63	80	G3/8	117.79
VH0630100	63	100	G3/8	120.35
VH0630125	63	125	G3/8	123.50
VH0630160	63	160	G3/8	127.97
VH0630200	63	200	G3/8	132.35
VH0630250	63	250	G3/8	138.74
VH0800050	80	50	G3/8	146.53
VH0800080	80	80	G3/8	151.85
VH0800100	80	100	G3/8	156.32
VH0800125	80	125	G3/8	160.76
VH0800150	80	150	G3/8	165.24
VH0800160	80	160	G3/8	166.97
VH0800200	80	200	G3/8	174.12
VH0800250	80	250	G3/8	183.15
VH0800300	80	300	G3/8	192.12
VH0800320	80	320	G3/8	195.53
VH0800350	80	350	G3/8	201.12

Dimensions																
Bore Ø mm	A	B	D	E	F	G	L	R	AM	BG	EE	KK	SW	VA	VD	WH
32	12	30	M6	47	48	28	94	33	22	16	1/8G	M10 X 1.25	10	4	20	26
40	16	35	M6	53	54	32	105	38	24	16	1/4G	M12 X 1.25	13	4	22	30
50	20	40	M8	65	69	32	106	47	32	16	1/4G	M16 X 1.50	16	4	28	37
63	20	45	M8	75	69	35	121	57	32	16	3/8G	M16 X 1.50	16	4	28	37
80	25	45	M10	95	86	36	128	72	40	16	3/8G	M20 X 1.50	21	4	34	46
100	25	55	M10	115	91	41	138	89	40	16	1/2G	M20 X 1.50	21	4	38	51
125	32	60	M12	140	119	45	160	110	54	20	1/2G	M27 X 2.00	27	5	50	65

Flange Mount Kit



For ISO 6431 Cylinder Screws & Mounting Bolt Included

Part No.	Bore Ø (mm)	Price £
BMF-32	32	9.88
BMF-40	40	12.24
BMF-50	50	13.28
BMF-63	63	18.10
BMF-80	80	23.25

Flange Mount



For ISO 6431 Cylinder

Part No.	Bore Ø (mm)	Price £
VFL032	32	16.38
VFL040	40	20.24
VFL050	50	22.44
VFL063	63	30.09
VFL080	80	38.91

Female Clevis Kit - Type 1



For ISO 6431 Cylinder Nuts - Washers - Pin - Circlip Included

Part No.	Bore Ø (mm)	Price £
BMP2-32	32	22.44
BMP2-40	40	24.90
BMP2-80	80	45.45
BMP2-50	50	32.08
BMP2-63	63	36.90

Female Clevis - Type 1



For ISO 6431 Cylinder

Part No.	Bore Ø (mm)	Price £
VCF032	32	11.92
VCF040	40	13.76
VCF050	50	15.10
VCF063	63	18.39
VCF080	80	32.79

Piston Rod Clevis-Yoke



For ISO 6431 Cylinder

Part No.	Bore Ø (mm)	Price £
FC040	40	6.09
FC050	50-63	12.53
FC080	80-100	22.68

Pin With Circlip For Female Clevis



For ISO 6431 Cylinder

Part No.	Bore Ø (mm)	Price £
VPE032	32	2.62
VPE040	40	2.79
VPE050	50	2.85
VPE063	63	3.91
VPE080	80	4.24

Male Clevis - Type 2



For ISO 6431 Cylinder

Part No.	Bore Ø (mm)	Price £
VCM032	32	13.44
VCM040	40	14.88
VCM050	50	18.09
VCM063	63	21.18
VCM080	80	27.18

Male Clevis Kit - Type 2



For ISO 6431 Cylinder Nuts & Washers Included

Part No.	Bore Ø (mm)	Price £
BMP4-32	32	21.83
BMP4-40	40	23.96
BMP4-50	50	31.33
BMP4-63	63	36.90
BMP4-80	80	45.45

Clevis Foot Mount



For ISO 6431 Cylinder

Part No.	Bore Ø (mm)	Price £
VCP032	32	7.50
VCP040	40	8.68
VCP050	50	10.59
VCP063	63	11.56
VCP080	80	16.94

Clevis Foot Mount Kit



For ISO 6431 Cylinder - Nuts & Bolt Included

Part No.	Bore Ø (mm)	Price £
BMS1-32	32	13.76
BMS1-40	40	14.15
BMS1-50	50	16.59
BMS1-63	63	18.94
BMS1-80	80	27.26

Cylinder & Piston Nuts



For ISO 6431/32 Cylinder, ISO6431 Uses NUT 10, 16 & 20 Only

Part No.	Bore Ø (mm)	Thread Size	Use For	Price £
NUT04	08-10	M4 x 0.7	Piston Rod	0.04
NUT06	12-16	M6 x 1.0	Piston Rod	0.06
NUT08	20	M8 x 1.25	Piston Rod	0.14
NUT10	25-32	M10X1.25	Piston Rod Lock & Piston Rod Nut	0.29
NUT12	40	M12X1.25	Piston Rod & Cylinder Mounting Nut	0.46
NUT16	50-63	M16X1.50	Piston Rod & Cylinder Mounting Nut	0.54
NUT20	80-100	M20X1.50	Piston Rod Lock Nut	1.15
NUT22	20-25	M22X1.50	Cylinder Mounting Nut	1.15

Piston Rod Eye



For ISO 6431 Cylinder

Part No.	Bore Ø (mm)	Price £
TF040	40	25.29
TF050	50-63	41.03
TF080	80-100	69.71

Mounting Accessories For Switch



For ISO 6431 Cylinder

Part No.	Bore Ø (mm)	Price £
DST032	32	4.95
DST040	40	5.46
DST050	50	4.95
DST063	63	5.46
DST080	80	5.46
DST100	100	5.99

Proximity Sensor



Technical Data: Contact : 3-220 Volt Max. AC/DC Voltage : 3-220 Volt Inductive Load Power : 10 VA Resistive Load Power : 6 Watt Connection Time : 0.5 msec Disconnection Time : 0.1 msec Connection Point : 110 Gauss Disconnection Point : 60 Gauss Electric Life : 10 impulses Contact Resistance : 0.1 ohms Cable Length : 2500 mm Operating Temperature : -20° to + 85°C Safety Device : IP67

Part No.	Description	Price £
DSM2C525	Sensor & Lead	27.83

Parker Legris
are in
Section 1



Brauer Airmovers & Strips



Brauer® AM10 Standard Fixed Gap Airmover



Technical Details: Material: Zinc alloy, Weight: 0.100Kg, Standard Gap: 0.05mm, DBA at: 5.5 bar is 72, Standard Inlet Threads: 1/8" BSP

Part No.	Price £
AM10	50.85

Brauer® AM20 Standard Fixed Gap Airmover



Technical Details: Material: Zinc alloy, Weight: 0.250Kg, Standard Gap: 0.05mm, DBA at: 5.5 bar is 79, Standard Inlet Threads: 1/4" BSP

Part No.	Price £
AM20	85.06

Brauer® AM40 Standard Fixed Gap Airmover



Technical Details: Material: Zinc alloy, Weight: 0.900kg, Standard Gap: 0.05mm, DBA at: 5.5 bar is 80, Standard Inlet Threads: 3/8" BSP

Part No.	Price £
AM40	116.09

Brauer® Aluminium Strip SE150 Airmover



Technical Details: Material: Aluminium/Zinc plated steel, Weight: 0.324Kg, Standard Gap: 0.5-0.10mm, DBA at: 5.5 bar is 80, Standard Inlet Threads: 1/4" BSP

Part No.	Price £
SE150	131.43

Brauer® Aluminium Strip SE600 Airmover



Technical Details: Material: Aluminium/Zinc plated steel, Weight: 1.35Kg, Standard Gap: 0.5-0.10mm, DBA at: 5.5 bar is 80, Standard Inlet Threads: 1/4" BSP

Part No.	Price £
SE600	251.92



CAMLOC Swift & Sure Gas Springs



Camloc Swift & Sure is an entirely self-contained, maintenance free, hydropneumatic ram which is charged under pressure with an inert gas (Nitrogen). It has the characteristics of a compression spring which, coupled with a small change in force as it extends, provides a controlled rate of movement. At the end of the extension stroke, oil damping occurs due to a hydraulically cushioned zone. These features help protect hinges and mounts by applying constant force with a damped end of travel.

Camloc Swift & Sure Gas Springs are ideally suited for use on vehicles of any size, machine guards, lockers, access panels, hood supports, hatch covers, lids and much more.

Camloc® Standard Swift & Sure with Vari-Lift™ - 6-15 Range



Features: Type: Variable Force, Rod Diameter: 6mm, Tube Diameter: 15mm, Thread M5 x 0.8, Force Range: 50 - 400N, Material: Nitrided steel piston rod - black powder coated steel tube - nylon/steel end connectors, Swift & Sure - Vari-Lift gas springs come gassed to maximum pressure. Boxed as a pair and fitted with BEA-P1 end fittings - they are also supplied with additional BEA-E1 end fittings - instructions and an allen key for adjusting force in-situ. Please note: Extended lengths quoted are between centres of BEA-P1 end fittings.

Part No.	Description	Price £
BEASWV06060	6-15 Swift & Sure Vari-Lift: 60mm Stroke - 400N (Extended Length: 195mm)	36.95
BEASWV06100	6-15 Swift & Sure Vari-Lift: 100mm Stroke - 400N (Extended Length: 275mm)	37.90
BEASWV06150	6-15 Swift & Sure Vari-Lift: 150mm Stroke - 400N (Extended Length: 375mm)	38.90
BEASWV06200	6-15 Swift & Sure Vari-Lift: 200mm Stroke - 400N (Extended Length: 475mm)	39.60

Camloc® Standard Swift & Sure with Vari-Lift™ - 8-18 Range



Features: Type: Variable Force, Rod Diameter: 8mm, Tube Diameter: 18mm, Thread M6 x 1.0, Force Range: 100 - 650N, Material: Nitrided steel piston rod - black powder coated steel tube - nylon/steel end connectors, Swift & Sure - Vari-Lift gas springs come gassed to maximum pressure. Boxed as a pair and fitted with BEA-B2 end fittings - they are supplied with additional BEA-B3 end fittings - instructions and an allen key for adjusting force in-situ. Please note: Extended lengths quoted are between centres of BEA-B2 end fittings.

Part No.	Description	Price £
BEASWV08100	8-18 Swift & Sure Vari-Lift: 100mm Stroke - 650N (Extended Length: 300mm)	41.30
BEASWV08150	8-18 Swift & Sure Vari-Lift: 150mm Stroke - 650N (Extended Length: 400mm)	42.05
BEASWV08200	8-18 Swift & Sure Vari-Lift: 200mm Stroke - 650N (Extended Length: 500mm)	43.35
BEASWV08250	8-18 Swift & Sure Vari-Lift: 250mm Stroke - 650N (Extended Length: 600mm)	45.00



For

Valves

see Section 20

Camloc® Standard Swift & Sure with Vari-Lift™ - 10-23 Range



Features: Type: Variable Force, Rod Diameter: 10mm, Tube Diameter: 23mm, Thread M8 x 1.25, Force Range: 150 - 1200N, Material: Nitrided steel piston rod - black powder coated steel tube - nylon/steel end connectors, Swift & Sure - Vari-Lift gas springs come gassed to maximum pressure. Boxed as a pair and fitted with BEA-B4 end fittings - they are supplied with additional BEA-Z5 end fittings - instructions and an allen key for adjusting force in-situ. Please note: Extended lengths quoted are between centres of BEA-B4 end fittings.

Part No.	Description	Price £
BEASWV10100	10-23 Swift & Sure Vari-Lift: 100mm Stroke - 1200N (Extended Length: 305mm)	57.95
BEASWV10200	10-23 Swift & Sure Vari-Lift: 200mm Stroke - 1200N (Extended Length: 505mm)	63.35
BEASWV10250	10-23 Swift & Sure Vari-Lift: 250mm Stroke - 1200N (Extended Length: 605mm)	66.00
BEASWV10300	10-23 Swift & Sure Vari-Lift: 300mm Stroke - 1200N (Extended Length: 705mm)	68.60

Camloc® Standard Swift & Sure with Vari-Lift™ - 14-28 Range



Features: Type: Variable Force, Rod Diameter: 14mm, Tube Diameter: 28mm, Thread M10 x 1.5, Force Range: 200 - 2500N, Material: Nitrided steel piston rod - black powder coated steel tube - nylon/steel end connectors, Swift & Sure - Vari-Lift gas springs come gassed to maximum pressure. Boxed as a pair and fitted with BEA-B6 end fittings - instructions and an allen key for adjusting force in-situ. Please note: Extended lengths quoted are between centres of BEA-B6 end fittings.

Part No.	Description	Price £
BEASWV14200	14-28 Swift & Sure Vari-Lift: 200mm Stroke - 2500N (Extended Length: 550 mm)	124.55
BEASWV14300	14-28 Swift & Sure Vari-Lift: 300mm Stroke - 2500N (Extended Length: 750mm)	122.85
BEASWV14400	14-28 Swift & Sure Vari-Lift: 400mm Stroke - 2500N (Extended Length: 950mm)	146.35
BEASWV14500	14-28 Swift & Sure Vari-Lift: 500mm Stroke - 2500N (Extended Length: 1150mm)	144.40





CAMLOC Econoloc Gas Springs



Econoloc gas springs eliminate the need for separate safety rods in critical lift-assist applications. They positively lock when fully extended, protecting the operator from potential injury in the event of overload or misuse.

The Econoloc is manually released by applying thumb pressure to the designated area of the safety locking shroud, allowing the gas spring to compress in a controlled manner. The safety locking shroud is finished with the same coating as the gas spring body, providing excellent corrosion resistance. A guide inside the shroud prevents scratching of the gas spring cylinder.

The Econoloc range of gas springs combine superior quality with the added safety feature required in many heavy duty applications such as trucks, construction machinery, switch gear and agricultural equipment. A single Econoloc gas spring is usually used in conjunction with a standard Swift & Sure version.

Camloc® Econoloc with Vari-Lift™ - 8-18 Range



Features: Type: Variable Force, Rod Diameter: 8mm, Tube Diameter: 18mm, Thread M6 x 1.0, Force Range: 100 - 650N, Material: Nitrided steel piston rod - black powder coated steel tube - nylon/steel end connectors, Econoloc Vari-Lift gas springs come gassed to maximum pressure and are boxed as a pair. They are fitted with BEA-B2 end fittings - and are supplied with additional BEA-E3 end fittings - instructions and an allen key for adjusting force in-situ. Please note: Extended lengths quoted are between centres of BEA-B2 end fittings.

Part No.	Description	Price £
BEAECV08100	8-18 Econoloc Vari-Lift: 100mm Stroke - 650N (Extended Length: 300mm)	43.90
BEAECV08150	8-18 Econoloc Vari-Lift: 150mm Stroke - 650N (Extended Length: 400mm)	48.95
BEAECV08200	8-18 Econoloc Vari-Lift: 200mm Stroke - 650N (Extended Length: 500mm)	50.10
BEAECV08250	8-18 Econoloc Vari-Lift: 250mm Stroke - 650N (Extended Length: 600mm)	48.55

Camloc® Econoloc with Vari-Lift™ - 10-23 Range



Features: Type: Variable Force, Rod Diameter: 10mm, Tube Diameter: 23mm, Thread M8 x 1.25, Force Range: 150 - 1200N, Material: Nitrided steel piston rod - black powder coated steel tube - nylon/steel end connectors, Econoloc Vari-Lift gas springs come gassed to maximum pressure and are boxed as a pair. They are fitted with BEA-B4 end fittings - and are supplied with additional BEA-Z5 end fittings - instructions and an allen key for adjusting force in-situ. Please note: Extended lengths quoted are between centres of BEA-B4 end fittings.

Part No.	Description	Price £
BEAECV10200	10-23 Econoloc with Vari-Lift: 200mm Stroke - 1200N (Extended Length: 525mm)	68.10
BEAECV10300	10-23 Econoloc with Vari-Lift: 300mm Stroke - 1200N (Extended Length: 725mm)	74.90



Brass Fittings are in Section 8



Camloc® Econoloc with Vari-Lift™ - 14-28 Range



Features: Type: Variable Force, Rod Diameter: 14mm, Tube Diameter: 28mm, Thread M10 x 1.5, Force Range: 200 - 2500N, Material: Nitrided steel piston rod - black powder coated steel tube - nylon/steel end connectors, Econoloc Vari-Lift gas springs come gassed to maximum pressure and are boxed as a pair. They are fitted with BEA-B6 end fittings - and are supplied with instructions and an allen key for adjusting force in-situ. Please note: Extended lengths quoted are between centres of BEA-B6 end fittings.

Part No.	Description	Price £
BEAECV14200	14-28 Econoloc with Vari-lift: 200mm Stroke - 2500N (Extended Length: 550mm)	136.20
BEAECV14300	14-28 Econoloc with Vari-lift: 300mm Stroke - 2500N (Extended Length: 750mm)	145.70
BEAECV14400	14-28 Econoloc with Vari-lift: 400mm Stroke - 2500N (Extended Length: 950mm)	163.15

CAMLOC Stainless Steel Swift & Sure Gas Springs

Camloc stainless steel gas springs give increased corrosion resistance in harsh and clean environments.

Manufactured in 316L stainless steel, this range of gas spring gives increased corrosion resistance in industrial, marine and costal environments.

Stainless Steel Swift & Sure gas springs are available in an extensive range of sizes.

They are made with a specially prepared chrome plated rod surface finish for additional hardness and protection against high levels of corrosion. Stainless steel Swift & Sure gas springs are ideally suited for use in harsh environment applications such as marine engine covers, doors, hatches and applications requiring high levels of cleanliness like the food, pharmaceutical and medical industries.

Camloc® Stainless Steel Swift & Sure with Vari-Lift™ - 6-15 Range



Features: Type: Variable Force, Rod Diameter: 6mm, Tube Diameter: 15mm, Thread M5 x 0.8, Force Range: 50 - 400N, Material: 316L stainless steel piston rod and tube - nylon/stainless steel end connectors, Stainless steel Swift & Sure - Vari-Lift gas springs come gassed to maximum pressure. Boxed as a pair and fitted with BEA-PE end fittings - they are supplied with additional BEA-E2 end fittings - instructions and an allen key for adjusting force in-situ. Please note: Extended lengths quoted are between centres of BEA-PE end fittings.

Part No.	Description	Price £
BEASXV06060	6-15 Stainless Steel Swift & Sure Vari-Lift: 60mm Stroke - 400N (Extended Length: 195mm)	50.05
BEASXV06100	6-15 Stainless Steel Swift & Sure Vari-Lift: 100mm Stroke - 400N (Extended Length: 275mm)	60.55
BEASXV06150	6-15 Stainless Steel Swift & Sure Vari-Lift: 150mm Stroke - 400N (Extended Length: 375mm)	78.55
BEASXV06200	6-15 Stainless Steel Swift & Sure Vari-Lift: 200mm Stroke - 400N (Extended Length: 475mm)	86.75



Section 21 Pneumatic Valves



Camloc® Stainless Steel Swift & Sure with Vari-Lift™ - 8-18 Range



Features: Type: Variable Force, Rod Diameter: 8mm, Tube Diameter: 18mm, Thread M6 x 1.0, Force Range: 100 - 650N, Material: 316L stainless steel piston rod and tube - nylon/stainless steel end connectors, Stainless steel Swift & Sure - Vari-Lift gas springs come gassed to maximum pressure. Boxed as a pair and fitted with BEA-PV end fittings - they are supplied with additional BEA-E3 end fittings - instructions and an allen key for adjusting force in-situ. Please note: Extended lengths quoted are between centres of BEA-PV end fittings.

Part No.	Description	Price £
BEASXV08100	8-18 Stainless Steel Swift & Sure Vari-Lift: 100mm Stroke - 650N (Extended Length: 300mm)	52.30
BEASXV08150	8-18 Stainless Steel Swift & Sure Vari-Lift: 150mm Stroke - 650N (Extended Length: 400mm)	63.90
BEASXV08200	8-18 Stainless Steel Swift & Sure Vari-Lift: 200mm Stroke - 650N (Extended Length: 500mm)	67.60
BEASXV08250	8-18 Stainless Steel Swift & Sure Vari-Lift: 250mm Stroke - 650N (Extended Length: 600mm)	80.05
BEASXV08300	8-18 Stainless Steel Swift & Sure Vari-Lift: 230mm Stroke - 650N (Extended Length: 700mm)	83.90

Camloc® Stainless Steel Swift & Sure with Vari-Lift™ - 10-23 Range



Features: Type: Variable Force, Rod Diameter: 10mm, Tube Diameter: 23mm, Force Range: 150 - 1200N, Material: 316L stainless steel piston rod and tube - nylon/stainless steel end connectors, Stainless steel Swift & Sure - Vari-Lift gas springs come gassed to maximum pressure. Boxed as a pair and fitted with BEA-G5 end fittings - they are supplied with additional BEA-J2 end fittings - instructions and an allen key for adjusting force in-situ. Please note: Extended lengths quoted are between centres of BEA-G5 end fittings.

Part No.	Description	Price £
BEASXV10100	10-23 Stainless Steel Swift & Sure Vari-Lift: 100mm Stroke - 1200N (Extended Length: 305mm)	116.70
BEASXV10200	10-23 Stainless Steel Swift & Sure Vari-Lift: 200mm Stroke - 1200N (Extended Length: 505mm)	135.35
BEASXV10250	10-23 Stainless Steel Swift & Sure Vari-Lift: 250mm Stroke - 1200N (Extended Length: 605mm)	142.50
BEASXV10300	10-23 Stainless Steel Swift & Sure Vari-Lift: 300mm Stroke - 1200N (Extended Length: 705mm)	161.70



Section 10

316 Stainless Steel Fittings



CAMLOC Accessories For Gas Springs



Camloc® End Fittings



Camloc gas springs offer a wide range of end fittings to suit your application - manufactured from a range of finishes and materials including nylon - steel and zinc. End fittings can be both the same or you can choose different sizes and types for each end providing flexibility of mounting.

Part No.	Description	Range	Price £
BEA-B2	Mild steel ball joint	8-18	3.30
BEA-B4	Mild steel ball joint	10-23	4.05
BEA-B6	Mild steel ball joint	14-28	22.85
BEA-P2	Nylon ball joint assembly	6-15	3.45
BEA-P5	Nylon ball joint assembly	8-18	2.70
BEA-PE	Nylon ball joint assembly (stainless steel)	6-15	3.45
BEA-PV	Nylon ball joint assembly (stainless steel)	8-18	4.65
BEA-G1	Stainless Steel ball joint	8-18	19.80
BEA-G5	Stainless Steel ball joint	10-23	12.90
BEA-C1	Mild steel clevis fork	6-15	7.80
BEA-C2	Mild steel clevis fork	8-18	4.80
BEA-C3	Mild steel clevis fork	10-23	5.70
BEA-C4	Mild steel clevis fork	14-28	5.80
BEA-H1	Stainless Steel clevis fork	8-18	5.10
BEA-H2	Stainless Steel clevis fork	10-23	6.15
BEA-F1	Mild steel flat eye	6-15	1.70
BEA-F2	Mild steel flat eye	8-18	1.30
BEA-F4	Mild steel flat eye	10-23	3.60
BEA-J1	Stainless steel flat eye	8-18	6.40
BEA-J2	Stainless steel flat eye	10-23	2.20
BEA-J3	Stainless steel flat eye	14-28	11.70
BEA-E1	Nylon eye	6-15	0.65
BEA-E3	Nylon eye	8-18	1.20
BEA-Z2	Zinc eye	8-18	2.70
BEA-Z3	Zinc eye	8-18	2.70
BEA-Z5	Zinc eye	10-23	2.70

Camloc® Mild Steel Brackets



Material: Mild Steel, Finish: Zinc Plate & Clear Passivate, Working Load (in all directions): 1800N

Part No.	Description	Price £
BEA-KPN	90 Degree Bracket with Threaded Pin M8 x 1.25	4.05
BEA-KPF	Flat Bracket with Threaded Pin M8 x 1.25	1.90
BEA-KBN	90 Degree Bracket with 10mm Ball Pin	3.25
BEA-KBF	Flat Bracket with 10mm Ball Pin	3.25



Ingersoll-Rand Air Motors



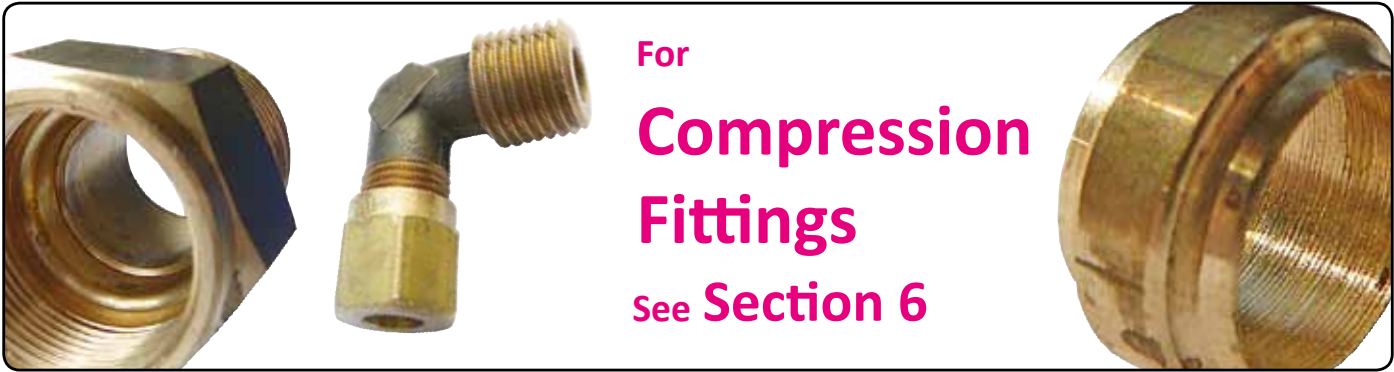
- Lube free: Airline lubrication not required for most applications.
- Variable speed: Controllable over a wide speed range by using a simple valve on your input air supply line.
- Great for harsh environments: No heat build up or sparks make air motors ideal for use in flammable or explosive applications.
- Instantly reversible: Easy reversing using a directional control valve.
- Compact and portable: Get maximum horsepower in minimum size.
- Minimum maintenance: Our motors have a proven history of long, low maintenance life. All you need to provide is a clean air supply.
- Will not burn out: Air motors can be stalled or overloaded for long periods without damage.
- No shock starts: Air cushioned start up cuts stress on your equipment. Accepts repeated starting and stopping without limitation.
- Available mounting: Foot, hub, face, Nema-C or metric (B5, B14).

Ingersoll-Rand® Direct Drive Multi-Vane Air Motors



Lube free airline operation for most applications, Will not burn out, Air motors can be stalled or overloaded for long periods without damage, Great for Harsh environments, no heat build up or sparks make air motors ideal for use in flammable or explosive applications, Instantly reversible, Compact & portable, get maximum horsepower from minimal size, Variable speed, you may utilise a wide range of speeds by using a simple valve on your input air supply line, Minimum maintenance, our motors have a proven history of a long low maintenance life, all that is required is a clean air supply, No shock starts, air cushioned start up cuts stress to your equipment.

Part No.	Mounting	Max Speed (RPM)	Rotation	No. Of Vanes	Matches With GAST Model	Price £
MRV003A	HUB	10000	REVERSIBLE	4	1AM-NCC-12 (CCW) & 1UP-NCC-1A (CCW) - 1AM-NCW-14 (CW) & 1UP-NCW-2A (CW) - 1AM-NRV-39A (REV) & 1UP-NRV-3A (REV) - 1AM-NRV-63A (REV) & 1UP-NRV-10 (REV)	193.60
MRV009F	FOOT	3000	REVERSIBLE	4	2AM-FCC-1 (CCW) & 2AM-FCW-13 (CW)	229.90
MRV009C	HUB	3000	REVERSIBLE	4	2AM-NCC-16 (CCW) & 2AM-NCC-16F (CCW) - 2AM-NCW-7A (CW) & 2AM-NCW-7B (CW) - 2AM-NRV-89 (REV) & 2AM-NCC-43A (REV)	245.63
MRV009B5D71-FL	FLANGE B5D71	3000	REVERSIBLE	4	2AM-ACC-88 (CCW) & 2AM-ARV-92 (REV)	278.30
MRV009B5D71-FA	FACE B5D71	3000	REVERSIBLE	4	2AM-ACC-91 (CCW) & 2AM-ARV-93 (REV)	278.30
MRV009A/NEMA56C	FLANGE NEMA 56C	3000	REVERSIBLE	4	2AM-NCC-43A & 2AM-NRV-90	314.60



For
**Compression
Fittings**
See **Section 6**

Let Us Help You With Your Breakdown

**Special Stroke Cylinder Build!
24/48 Hour Service**



Clean Design = Less Contamination

Stainless Steel Rod = Non Corrosive

Parker Polyurethane Seals = Long Life

Magnetic Piston = Sensor Flexibility

Slotted and Eared Profile = Accepts Dovetail & Bracket Sensor

Heavy Duty Piston Assembly = Premium Performance as Standard

Polymer 400 Lubrication = Smooth Running

Contact Us To Discuss Your Requirements

Bore Sizes From 32 to 125 Bore

Stroke Lengths Up To 2500mm